

YOUR NEAREST TRADESMART MEMBER IS:



See back page for store locations

WWW.TRADESMART.NET.AU

1 JULY - 30 SEPTEMBER 2024

# TOOLS FOR EVERY JOB

P/N: AU60360820

## 125MM 850W ANGLE GRINDER

WITH BONUS 10 CUTTING DISCS AND CLIP ON GUARD VALUED AT OVER \$30

**\$119<sup>00</sup>**

GREAT BUY!



**BONUS**

10 CUTTING DISCS  
AND CLIP ON  
GUARD VALUED AT  
OVER \$30

**metabo**  
100 YEARS

- Robust, universal and economical
- Powerful motor with good overload capacity
- Twist-proof guard

P/N: KBP103

## KNIPEX 3PCE PROFESSIONAL PLIER SET

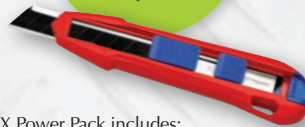
WITH BONUS KNIPEX CUTIX® UNIVERSAL KNIFE

**\$235<sup>00</sup>**

GREAT BUY!



**BONUS**  
KNIPEX CUTIX®  
UNIVERSAL KNIFE  
RRP \$64.95



KNIPEX Power Pack includes:

- 250mm Cobra® Hightech Water Pump Pliers
- 200mm High Leverage Combination Pliers
- 200mm High Leverage Diagonal Cutter

BONUS KNIPEX CutiX® Universal Knife

P/N: 691181WP

## ST 181X INVERTER WELDER 240V 15A

WITH BONUS PRO CHIP HAMMER BRUSH & GEMINI 13 ELECTRODE

**\$299<sup>00</sup>**

GREAT BUY!



**BONUS**

PRO CHIP HAMMER  
BRUSH & 2 X GEMINI  
13 ELECTRODES,  
COMBINED  
RRP \$53

- 180 amp MMA (stick) welder capable of DC TIG weld with lift ARC start
- Lightweight & portable welder that weighs only 3.5kg
- 15 amp fitted plug
- Digital LED display with stepless amperage control

**BOSSWELD X series**  
WELD LIKE A BOSS

P/N: 2015-M3-SDM1

## DELTA POINT M2-HSS JOBBER DRILL SET

WITH BONUS HSS STEP DRILL. RRP \$45

**\$185<sup>00</sup>**

GREAT BUY!



- 25 Piece Bright Finish Drill Set in ABS Plastic Case
- 1mm-13mm in .5mm increments
- multi-faceted cutting tip
- Drills faster lasts longer.

**BONUS**  
HSS STEP  
DRILL  
RRP \$45

**BORDO**  
INDUSTRIAL TOOLS

GREAT VALUE  
FOR MONEY!

**TradeSmart**  
INDUSTRIAL GROUP  
STRENGTH IN NUMBERS

# SHOP SMART - BUY SMART!

## HAND TOOLS

**sutton**

Superior Since 1917



**BONDHUS**

**9pc Ball End Hex Key Set Metric**

• 1.50 - 10mm

**\$44.95**  
INC GST  
P/N: BD10999



**CHANNEL LOCK**



**Straight Jaw Tongue and Groove Pliers**



• Patented reinforcing edge to minimise stress breakage and right angle, laser heat-treated teeth to provide a better, longer lasting grip.

Size	Item #	Price Inc. GST
241mm (9.5")	420	<b>\$75.00</b>
111mm (4.5")	424	<b>\$63.00</b>
165mm (6.5")	426	<b>\$67.00</b>
254mm (10")	430	<b>\$75.00</b>
305mm (12")	440	<b>\$82.00</b>

**Sterling**

**NIGHTHAWK**

**BLACK PANTHER**  
INDUSTRIAL SNIPS



**185mm Black Panther Industrial Snips**

7" black handled snips  
• Ideal knife replacement tool  
• Ideal for multiple applications from thin wire to Kevlar\*

**\$29.95**  
INC GST  
29-701



**185mm Black Panther Round Points Industrial Snips**

7" orange handled snip  
• With rounded tip blades for extra safety  
• Ideal for multiple applications from thin wire to Kevlar\*

**\$29.95**  
INC GST  
29-704



**Sterling Nighthawk Folding Pocket Knife**

Tough 5CR13 Stainless Steel Blade  
• Used for: General trades, camping, fishing, sport and more

**\$34.95**  
INC GST  
3041



**Sterling Stealth Autoloading Sliding Pocket Knife**

Automatic blade loading  
• Quick-flip blade change function  
• Slide-lock retractable blade  
• 5 blade storage compartment  
• Comfortable shaped grip

**\$32.00**  
INC GST  
3038

**union**  
Industrial Brushes

**CUP BRUSHES-TWIST KNOT**

PRICED FROM  
**\$12.00** EACH



- Wire: 0.5
- Mount: M14 x 2.0
- Mount Adaptor: M10 X 1.5 \*KCC-24 & KCC-34

Ø	PART NO	PRICE EACH
65MM	KCC-24 4203442	\$12.00
75MM	KCC-34 4204442	\$14.00
100MM	KCC-44 4206442	\$32.00

**WIRE HAND BRUSHES**

PRICED FROM  
**\$7.50** EACH



WIRE	PART NO	PRICE EACH
BRASS COATED STEEL 0.35	HNJP-91 7318940	\$7.50
PVC 0.5	HNJ-97 7318970	\$8.00
STAINLESS STEEL 0.35	HNJ-93 7318930	\$9.95
BRASS 0.35	HNJ-92 7318920	\$11.00

**SURETORQ**

**6 PCE BOLT EXTRACTOR SET**

**\$36.95**  
GREAT VALUE



PART NO. 04400604

- 3/8" Drive Extractor Sockets: 5/16" (8mm), 10mm, 12mm, 13mm, 9/16" (14mm)
- Adapter: 50mm: 1/4" Hex to 3/8" SQ

**Ehoma**  
Clamping Solutions By FTM®

**LOCKING PLIERS**



**CURVED JAW**

- Hardened teeth are designed to grip from any angle
- Jaw length: 250mm
- Jaw opening: 53mm

**\$26.00**  
GREAT VALUE!

TM604-202



**SHEET METAL**

- Designed for bending, forming, and crimping sheet metal
- Also ideal for upholstery work
- Jaw length: 200mm
- Jaw opening: 62mm

**\$30.00**  
GREAT VALUE!

TM604-500



**WELDING CLAMP**

- For use in welding applications or for holding awkward shapes in place
- Jaw length: 200mm
- Jaw opening: 70mm

**\$34.00**  
GREAT VALUE!

TM604-600



**C CLAMP SWIVEL PAD**

- Wide-opening jaws provide greater versatility in clamping a variety of shapes
- Jaw length: 275mm
- Jaw opening: 85mm

**\$38.00**  
GREAT VALUE!

TM604-102



**AUTO LOCKING CURVED JAW**

- Jaws automatically adjusted to required size whilst maintaining the same clamping pressure
- Jaw length: 250mm
- Jaw opening: 48mm

**\$69.00**  
GREAT VALUE!

TM605-202



**LOCKING PLIERS - 3 PIECE SET**

- Includes:
- 150mm Long Nose
  - 175mm Straight Jaw
  - 250mm Round Jaw

**\$70.00**  
GREAT VALUE!

TM604-SET30

Build it Better with

**BREMICK®**



KINCROME

KINCROME

**\$3999.00**  
GREAT DEAL!

**Off-Road Field Service Kit – 452 Piece**

**Black** PN: K1285  
**White** PN: K1285W



- > 452 Piece 6 Drawer 39"
- > 93 Piece Sockets & Accessories EVA Tray
- > 30 Piece Combination Spanners EVA Tray
- > 12 Piece Pliers & Wrenches EVA Tray and more

**\$3399.00**  
GREAT DEAL!

**6 Drawer Off-Road Tool Kit – 426 Piece**

**Black** PN: K1280  
**White** PN: K1280W



- > 93 Piece Sockets & Accessories EVA Tray
- > 30 Piece Combination Spanners EVA Tray
- > 13 Piece TorqueMaster® Screwdriver Set
- > 14 Piece Impact Screwdriver Set and more

**\$159.00**  
GREAT DEAL!

**1/4" & 3/8" Drive Socket Set Metric/Imperial – 52 Piece**

PN: K28016



- > 10 Metric 1/4" Sockets: 4 – 13mm
- > 10 Imperial 1/4" Sockets: 5/32 – 1/2"
- > 15 Metric 3/8" Sockets: 5 – 21mm
- > 11 Imperial 3/8" Sockets: 1/4 – 7/8"

**\$199.00**  
GREAT VALUE!

**3/8" Drive BMC Metric Tool Kit – 70 Piece**

PN: K1845



- > 11 Metric 3/8" Drive Sockets: 8 – 19mm
- > 6 3/8" Drive Socket Accessories
- > 7 Metric Combination Spanners: 8 – 15mm
- > 33 Piece General Bit & Holder Set and more

**\$379.00**  
GREAT VALUE!

**3/8" Drive BMC Kit Met/Imp Tool Kit – 96 Piece**

PN: K1850



- > 15 Metric 3/8" Drive Sockets: 8 – 24mm
- > 11 Imperial 3/8" Drive Sockets: 3/8 – 1"
- > 5 3/8" Drive Socket Accessories
- > 11 Metric Combination Spanners: 8 – 19mm and more

**\$529.00**  
GREAT VALUE!

**1/2" Drive BMC Workshop Tool Kit Metric – 94 Piece**

PN: K1865



- > 19 Metric 1/2" Drive Sockets: 8 – 32mm
- > 7 1/2" Drive Socket Accessories
- > 14 Metric Combination Spanners: 8 – 24mm
- > 3 TorqueMaster® Screwdrivers and more

**26 PCE METRIC SOCKET SET**



**\$269.00**  
SUPER DEAL

PART NO. 60S202601

- Metric Standard Length: 10mm-36mm
- Blow-Mold Case



**53 PCE METRIC & IMPERIAL SOCKET SET**



**\$249.00**  
GREAT VALUE

PART NO. 10045302

- 10 Piece Imperial Standard Length: 3/16"-9/16"
- 10 Piece Imperial Deep Length: 3/16"-9/16"
- 14 Piece Metric Standard Length: 4mm-15mm
- 14 Piece Metric Deep Length: 4mm-15mm
- 72 Tooth Ratchet Handle with Quick Release Button
- 50mm, 100mm & 150mm Extension Bar
- 150mm Wobble Spinner Handle
- Blow-Mold Case



**59 PCE METRIC & IMPERIAL SOCKET SET**



**\$299.00**  
SUPER DEAL

PART NO. 10145901

- 12 Piece Imperial Standard Length: 5/16"-1"
- 12 Piece Imperial Deep Length: 5/16"-1"
- 16 Piece Metric Standard Length: 7mm-22mm
- 16 Piece Metric Deep Length: 7mm-22mm
- 72 Tooth Ratchet Handle with Quick Release Button
- 75mm & 150mm Wobble Extension Bar
- Blow-Mold Case



**40 PCE METRIC & IMPERIAL SOCKET SET**



**\$389.00**  
GREAT VALUE

PART NO. 14244001

- 40 Piece Metric & Standard Length
- 10mm-32mm
- 3/8"-1-1/4"
- 24 Tooth Ratchet Handle with Quick Release Button
- 125mm & 250mm Wobble Extension Bar
- 14mm, 16mm & 21mm Magnetic Spark Plug Socket
- 1/2" Dr Universal Joint
- Blow-Mold Case



**HEAVY-DUTY ALUMINIUM PIPE WRENCH RANGE**

- Heavy-duty cast aluminium construction
- Corrosion-resistant finish
- Drop-forged jaw



Part No.	Size	Jaw Width	Price
TM621-250A	250mm	33mm	\$25.00
TM621-300A	300mm	42mm	\$36.00
TM621-350A	350mm	48mm	\$46.00
TM621-450A	450mm	60mm	\$69.00
TM621-600A	600mm	73mm	\$109.00
TM621-900A	900mm	102mm	\$219.00

**RATCHET PODGERS**

- Premium quality drop forged chrome vanadium steel
- Dual sized ratchet head with reversible lever action
- Regular & stubby versions available
- Made in Taiwan

Part No.	Size	Length	Style	Price
TM632-1012	10mm x 12mm	240mm	Regular	\$45.00
TM632-1317	13mm x 17mm	280mm	Regular	\$49.00
TM632-1719	17mm x 19mm	315mm	Regular	\$55.00
TM632-1921	19mm x 21mm	315mm	Regular	\$55.00
TM632-1924C	19mm x 24mm	240mm	Stubby	\$59.00
TM632-2124	21mm x 24mm	315mm	Regular	\$59.00
TM632-2124C	21mm x 24mm	240mm	Stubby	\$55.00
TM632-3032	30mm x 32mm	450mm	Regular	\$89.00
TM632-3036	30mm x 36mm	450mm	Regular	\$89.00



**FLAT RING SLOGGING SPANNERS**

- Premium quality chrome molybdenum steel
- Engineered for durability and impact resistance
- Flat, open ring style
- Made in Taiwan
- Imperial sizes also available

Part No.	Size	Price
TM630-M021	21mm	\$28.00
TM630-M022	22mm	\$28.00
TM630-M027	27mm	\$28.00
TM630-M032	32mm	\$28.00
TM630-M036	36mm	\$40.00
TM630-M046	46mm	\$75.00



**New BK Series Tool Boxes**  
A Serious Truck Toolbox  
Made TOUGH for Australian Conditions



**New BK Series Tool Boxes**  
A Serious Truck Toolbox  
Made TOUGH for Australian Conditions



**LONGREACH STEEL TOOL BOXES**



# HOT DEALS STOREWIDE!

## HAND TOOLS

sutton®

Superior Since 1917

### P&N® Engineer Rulers

P&N Workshop Stainless Steel Rulers are ideal for marking, line drawing and has an accurate straight edge when cutting. Accurate deep etched measurements for engineers, trade and DIY use.

- 1mm and 0.5mm graduations
- Conversion charts on the back

Size	Item #	Price Inc. GST
150mm	267MS1015	<b>\$4.95</b>
300mm	267MS1030	<b>\$10.95</b>
600mm	267MS1060	<b>\$26.95</b>
1000mm	267MS1100	<b>\$44.95</b>



### Combination Square 3 in 1

- Size: 300mm
- Mitre square, spirit level, plumb level, 45° level, height gauge, steel rule, straight edge and scriber

**\$142.00**  
INC GST  
P/N: 267CS3030



### Spring Dividers

- P&N Workshop Spring Dividers provide a high degree of accuracy and repeatability. The adjusting screw allows careful adjustment without removal of the tool from the workpiece.
- Easy hold handle on top
- Made from Carbon Steel

Size	Item #	Price Inc. GST
100mm	267MTQ104	<b>\$26.95</b>
150mm	267MTQ106	<b>\$29.95</b>
200mm	267MTQ108	<b>\$32.50</b>

## KINCROME

### Ball Pein Hammer

- 16oz-Graphite PN: K9301
- 24oz-Graphite PN: K9303
- 32oz-Graphite PN: K9304



- > Fiberglass handle with graphite core
- > Ergonomic gel-grip handle provides a secure grip
- > Anti-vibration handle minimises vibration and fatigue
- > Overstrike protection reduces damage on mis-hits

**\$38.95**

16OZ-GRAPHITE

**\$49.95**

24OZ-GRAPHITE

**\$54.95**

32OZ-GRAPHITE

### Club Hammer

- 3lb-Graphite PN: K9320
- 4lb-Graphite PN: K9321
- Long Club Hammer 4lb-Graphite PN: K9322



- > Fiberglass handle with graphite core
- > Ergonomic gel-grip handle provides a secure grip
- > Anti-vibration handle minimises vibration and fatigue
- > Overstrike protection reduces damage on mis-hits

**\$44.95**

3LB-GRAPHITE

**\$49.95**

4LB-GRAPHITE

**\$54.95**

4LB-GRAPHITE

### Sledge Hammer

- 8LB-GRAPHITE PN: K9060
- 10LB-GRAPHITE PN: K9061
- 12LB-GRAPHITE PN: K9062



- > Fiberglass handle with graphite core, 30% stronger
- > Handle length: 900mm
- > Overstrike protection

**\$115.00**

8LB-GRAPHITE

**\$119.00**

10LB-GRAPHITE

**\$125.00**

12LB-GRAPHITE

Made Tough Since 1936

MUMME TOOLS

[mummetools.com.au](http://mummetools.com.au)

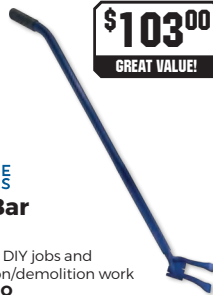


**\$179.00**  
GREAT VALUE!



**Heavy Duty Pry Bar - Plus 7kg**  
> Used for guiding and levering pre-cast concrete panels  
SKU: 7PRBHPD

**\$103.00**  
GREAT VALUE!



**Reno Bar 2.7kg**  
> Great for DIY jobs and renovation/demolition work  
SKU: 5RENO

**\$32.00**  
GREAT VALUE!



**Utility Wrecking Bar 0.63kg**  
> Used for construction and carpentry work such as door fitting  
SKU: 5WBU



**\$75.00**  
FROM  
HOT BUY!



**Trenchinator Remover Bar**  
> Used for digging holes and trenches, removing tree root balls, and breaking up rocks  
SKU: 5PIB1500 1500MM **\$75.00**  
SKU: 5PIB1650 1650MM **\$79.95**



Made Tough Since 1936

MUMME TOOLS

[mummetools.com.au](http://mummetools.com.au)



**\$149.95**  
GREAT VALUE!



**Star Dropper Hammer 8.8kg**  
> Used for driving in star droppers, star pickets or fencing droppers, marker pegs, stakes and concreting stakes  
SKU: 5SDSH

**\$195.00**  
GREAT VALUE!



**Star Dropper Remover 920mm**  
> Used for removing star droppers, star pickets or fencing droppers, selected pipes and steel pegs  
SKU: 5SSDR



**\$32.00**  
FROM  
HOT BUY!



**Hexagon Wrecking Bars**  
> Finely ground and sharpened ends make demolition work easier and more efficient  
SKU: 5WB60020 600X20mm **\$32.00**  
SKU: 5WB75020 750X20mm **\$35.95**



**Proffered®**  
**BBI TOOLS**

The Quality You Know™



**GENERATORS & PRESSURE WASHERS**



**FREE GENERATOR COVER**

**FREE GENERATOR COVER**

**iGen2600**  
2200 Running Watts  
2600 Starting Watts

**\$1799**  
GREAT VALUE!

**iGen4500s**  
3700 Running Watts  
4500 Starting Watts

**\$2939**  
GREAT VALUE!

**WHXC8500E**  
6750 Running Watts  
8500 Starting Watts

**\$2399**  
GREAT VALUE!

**WPX3200**  
3,200 psi, Petrol  
Pressure Washer

**\$799**  
GREAT VALUE!



PURE SINE WAVE

ELECTRIC START  
Remote Control

ELECTRIC START  
SINE WAVE/OUTPUT  
AVR EQUIPPED

SAVE WATER  
UP TO  
80%

**ITM INVERTER GENERATOR RANGE**

- Permanent magnet inverter with E.S.C. (Engine Smart Control) - Reduces noise and fuel consumption
- Pure sine-wave technology - Safe to use with sensitive electronic equipment
- Ultra quiet at just 52-59 dB - Great for job site or camping
- Parallel connection capability - Join multiple inverters together to increase total output
- 2-Year warranty



Part No.	Max. Watts	Rated Watts	Outlets	Run Time At 50% Load	Starting System
TM523-1800	1800	1600	1x15A	7hr	Recoil
TM523-3300	3300	2500	2x15A	4.5hr	Recoil
TM523-4500	4500	3500	2x15A	8hr	Electric - Recoil
TM523-7000	7000	6500	2x15A 1x30A	10hr	Electric - Recoil

1800 WATT  
**\$1099.00**  
GREAT VALUE!  
TM523-1800

3300 WATT  
**\$1499.00**  
GREAT VALUE!  
TM523-3300

4500 WATT  
**\$1999.00**  
GREAT VALUE!  
TM523-4500

7000 WATT  
**\$3999.00**  
GREAT VALUE!  
TM523-7000

**DUNLITE Generators**

**\$1695**  
NEW PRODUCT

**W&C WELLING & CROSSLEY**

**8.75 kVA Petrol E/Start Generator**  
WC-P8750

- Euro 5 emission compliant
- Automatic Voltage Regulator
- Long range 25L petrol tank
- Wheels, handles & battery included



EURO 5

**2.8 kVA Petrol Generator**

DGUH2.3S-2

- Honda® Australia GP200 recoil engine
- Italian NSM alternator
- Built in Australia



FREE COVER  
VALUED AT OVER \$65

POWERED by HONDA

EURO 5

**\$835**  
GREAT VALUE

**3.3 kVA Petrol Generator**

DGUH2.7S-2-RCD

- Honda® Australia GX200 recoil engine
- 2 x 15Amp RCD outlets with c/breaker
- Italian NSM alternator



FREE COVER  
VALUED AT OVER \$65

POWERED by HONDA

EURO 5

**\$1429**  
MATES RATES

**8 kVA Petrol Generator**

DGUH7S-2

- Honda® Australia GX390 recoil engine
- Italian NSM alternator
- Built in Australia



FREE COVER  
VALUED AT OVER \$70

POWERED by HONDA

EURO 5

**\$2499**  
HOT BUY!

**ITM PETROL PRESSURE WASHERS**

- High quality Honda engines
- Renowned Annovi Reverberi pumps
- EPA & EMC certified
- Puncture proof solid treaded wheels
- Heavy-duty powder coated frame
- Quick connect hoses
- Quick connect spray tips
- 2-Year trade warranty
- 3-Year Honda engine warranty



Engine	5.5hp GP160	6.5hp GX200
Max. Pressure	2500psi	3200psi
Max. Flow Rate	8.7 L/min	9.5 L/min
Hose Length	7.6m	10m
Part No.	TM542-2500	TM542-3200
Price	\$1,199.00	\$1,499.00

POWERED by HONDA

**ITM 3800PSI PETROL PRESSURE WASHER**

- High quality 274cc industrial engine
- Engine Horse Power: 8hp
- Max. Pressure: 3800psi (262 Bar)
- Max. Flow Rate: 13.2 L/min
- Displacement: 274cc
- Fuel Tank: 5L
- Start Type: Recoil
- Pump type: 3 Piston Triplex pump with brass head
- Quick connect nozzles: 0°, 15°, 25°, 40°, Soap and turbo nozzle

**\$1499.00**  
GREAT VALUE!  
TM540-3800



**ITM SURFACE CLEANERS**

- 380mm (15") Diameter
- 3,200psi Max. pressure
- 1/4" Inlet

**\$189.00**  
GREAT VALUE!  
TM541-015

- 535mm (21") Diameter
- 4,200psi Max. pressure
- 3/8" Inlet

**\$899.00**  
GREAT VALUE!  
TM541-021

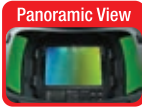


FREIGHT CHARGES MAY APPLY



# SHOP SMART - BUY SMART

## WELDING ACCESSORIES



### BT / TECMEN PAPR FREFLOW



**\$1599.00**  
EA  
P/N: 703090

**TM1000**  
Large Viewing Area:  
**107 x 75mm**

Easy Lift Up for Grinding

**\$1199.00**  
EA  
P/N: 703200

**TM16**  
Large Viewing Area:  
**97 x 62mm**

External grind mode switch

Comes with a PAPR blower unit, rechargeable Li-ion battery, carry bag & shoulder strap

- 1 / 1 / 1 / 1 Highest Optical Class
- Dual Shade Range 5-8 / 9-13
- See True Colours with "RealLens™ Technology"
- Four Independent Sensors

**CLASS LEADING P3 FILTER**

**HIGH FILTER EFFICIENCY > 99.97%**



### BT-11 GASLESS MIG WIRE

- A5.20 E71T-11
- Smooth Arc action DC-
- No shielding gas required
- Suitable for single and multiple pass applications

**\$68.00**  
EA  
P/N: 200360

**\$67.00**  
EA  
P/N: 200361



CODE BT-11 MIG Wire  
200360 Gasless 0.8mm x 5kg  
200361 Gasless 0.9mm x 5kg



by **maxisafe**

**Ready 2 Weld Kit**



Complies to AS/NZS 1716:2012, AS/NZS 13371:2010

### Omnira COMBI Welding Helmet & Basic PAPR Kit

R813201



**\$1999.00**  
inc.GST  
**GREAT DEAL**

### Verus Welding Helmet & Basic PAPR Kit

R813001



**\$1649.00**  
inc.GST  
**GREAT DEAL**

[maxisafe.com.au](http://maxisafe.com.au)

## INTECH

MADE FOR THE TRADE



**SUPERMIG WELDING GLOVES**  
**\$129.95**  
GSMIG-XL

- Manufactured from premium cowhide leather
- Cotton fabric lining
- Stitched with Kevlar® thread
- Reinforced palm, thumb and knuckle guard with welted seams
- 406mm long

**1.8MX1.8M WELDERS BLANKET**  
**\$71.00**  
WB18



- WB18 Welding blanket 1.8 mtr x 1.8 mtr \$71
- WB20 Welding blanket 2 mtr x 2 mtr \$89
- WB 30 Welding blanket 3 mtr x 3 mtr \$199

- Made from heavy duty cow split leather
- Stitched with Kevlar® thread to increase resistance to heat, cuts & abrasion
- Included Eyelets on outer edges for securing



**PREMIUM RED LEATHER MEDIUM WELDERS JACKET**  
**\$79.00**  
WJFL-M

- WJFL-M Leather Welding Jacket Medium \$79
- WJFL-L Leather Welding Jacket Large \$79
- WJFL-XL Leather Welding Jacket Extra Large \$79
- WJFL-2XL Leather Welding Jacket 2 Extra Large \$79
- WJFL-3X Leather Welding Jacket 3 Extra Large \$79

- Premium cowhide leather
- Press Studs for front closure
- Pocket on sleeves for pens
- Adjustable cuffs
- Internal Pocket
- Side adjusters with press studs
- Wear areas reinforced with rivets
- 730 mm long
- Harness Compatible Flap on the back
- Stitched with Kevlar® thread
- Lined shoulders for comfort
- Made to Australian sizes



**WELDING APRON**  
**\$39.00**  
WAPR-XL

- Premium quality cow split leather
- Size: 900mm x 600mm
- Pockets for tools, rulers, markers etc
- Stress points are riveted
- Stress areas are double stitched with Kevlar® thread

**\$129.00**  
**GREAT VALUE!**



**Shadow™ Split Leather-Sleeved Jacket.** Durable split cowhide sleeves, cool flame retardant material on the chest offers extra protection. Flip up collar is secured by hook and loop and a lined flap on the back snaps closed for added protection. Two hip pockets for personal items.  
PART NUMBERS: K2986-M, K2986-L, K2986-XL, K2986-XXL, K2986-XXXL

**\$359.00**  
EACH  
**SAFETY FIRST**



**Viking® 3350 Series 4 Helmets with 4C Lens.** 4C Technology – perfect 1/1/1 optical clarity. External grind button. Innovative X6 Headgear™ improves comfort. Continuously variable 5-13 shade with internal control. Large 95 x 85 mm view size. 4 arc sensors. Solar cells with a replaceable lithium battery. Part Numbers: K3034-4 Black, K3101-4 Mojo.

Scan the code below to discover our complete range of welding equipment and accessories.



# HOTTEST DEALS!

## WELDING ACCESSORIES

Purchase Powercraft 200M or Powercraft 206 AC/DC TIG below and receive a BONUS via Redemption



**\$1,989<sup>00</sup>**  
MULTI WELDER



**\$1,699<sup>00</sup>**  
AC/DC TIG

Powercraft® 200M 4-in-1 Multi-welder. 200-amp 240V input / 10amp multi-purpose 4 in 1 welder with EZYSET™ technology & easy to use LCD Screen – the only welder you will ever need. Part Number: K69074-1

Powercraft® 206 AC/DC TIG Welder. 200Amp output / 10amp input ACDC TIG Welder capable of HF and Lift TIG AC/DC, TIG pulse AC/DC, TIG Spot, Stick Welding. Part Number: K69079-1

## BONUS

### VIA REDEMPTION

Use QR Code to redeem Pack valued at \$295.00

Includes:



LINCOLN ELECTRIC

www.powercraft-lincolnelectric.com.au · The Welding, Cutting, Automation and Filler Metal Experts

### STIBIX

Inverter Welder

**\$299.<sup>00</sup> EA**  
P/N: 691181WP

- 180A output, 15A plug
- MMA & DC lift TIG welder
- Digital LED display
- Welder only weighs 3.5kg

**BONUS ITEMS**

- Pro-Chip Hammer/Brush
- Gemini 13 Electrode 2.6mm 2kg 2pkt

### BOSSWELD Xseries

WELD LIKE A BOSS

**\$979.<sup>00</sup> EA**  
P/N: 699188BUNDLE

- 180A output, 10A plug
- MIG / Stick / TIG welder
- Digital LED display
- DC TIG lift arc start
- Excellent arc stability
- Gas /gasless operation
- 2T / 4T trigger latching
- Generator safe
- Suits D100/D200 spools
- Stepless amperage control
- Spool gun ready

**BUNDLE CONTAINS**

- BossWeld Trolley Universal
- Gasless GS MIG Wire 0.8mm 4.5kg
- Mild Steel MIG Wire 0.8mm 5kg
- Wide View Electronic Welding Helmet (Helmet Style May Vary)
- 16" Black & Gold Welding Gloves

**MST188X**  
Inverter Welder

### BT/TECMEN FLIP FRONT WELDING HELMET

**\$429.<sup>00</sup> EA**  
P/N: 703110

**BT**  
**TECMEN**

- Panoramic View
- See True Colours with "ReaLens™ Technology"
- Large viewing area: 107 x 75mm
- 1 / 1 / 1 / 1 Highest Optical Class
- Dual Shade Range 5-8 / 9-13
- Four Independent Sensors

### ULTRA 250MST MACHINE BUNDLE

Made in Italy 10 YEAR WARRANTY

**\$2899<sup>00</sup>** (incl. GST)  
WC-PD250MSTA

- Made in Europe
- 250A max MIG output
- Welds up to 12mm Mild Steel (max MIG capacity)
- Fitted with 15A 240V plug\*
- LCD display - Interactive & easy to use
- Manual or Synergic MIG controls

**FREE** Promax 650 Helmet and Ultra 136S Stick Welder (Made in Italy) valued at \$718

### ULTRA 210MST MACHINE BUNDLE

Made in Italy 10 YEAR WARRANTY

**\$2149<sup>00</sup>** (incl. GST)  
WC-PD210MSTA

- Made in Europe
- 210A max MIG output
- Welds up to 10mm Mild Steel (max MIG capacity)
- Fitted with 10A 240V plug\*
- Dual Input Modes: 10A plug (fitted) or 15A plug (optional)\*
- LCD display - Interactive & easy to use
- 26+ MIG Programs

**FREE WELDING TABLE VALUED AT \$299 RRP**

### FORCE 135ST STICK / TIG WELDER

1 YEAR WARRANTY OFFER

**\$249<sup>00</sup>** (incl. GST)  
WF-06169

- 140A max output @ 20% duty cycle
- Weld with up to 3.2mm electrodes
- Fitted with 10A 240V plug
- 2.3kg super compact
- Adjustable Hot Start & Arc Force
- Generator Compatible - min 7kva, ideal 8kva

**INCLUDES:**

- Earth lead 3m
- Stick lead 3m
- Shoulder strap

**BONUS WELDING GLOVES**

### PLATINUM PX GLASS CUP SERIES TIG PARTS & KITS

- All-in-one, ready-to-weld kits
- Fits common 17/18/26 series TIG torches
- Includes 1.6/2.4/3.2mm tungstens
- High-temperature pyrex-style glass cups provide superior arc visibility compared to ceramic cups

Part No.	Description	Price
WC-01662	Platinum PX 17/18/26 Std Diameter	\$99.00
WC-01663	Platinum PX 17/18/26 Lrg Diameter	\$179.00

### PROMAX MG12 MINI MAGNETS

- 90°, 45°, or 60/30° angles
- Low profile, height 60mm
- Ideal for holding work pieces at multiple points
- Max pull force of approx 12kg\*
- Aluminium clad enclosure for easy cleaning

Part No.	Description	Price
WC-01875	2-Pack	\$29.95
WC-01876	6-Pack	\$79.00

### PROMAX MG20 SERIES ON/OFF MAGNETS

- Heavy-duty magnets with on-off switch for easy and safe positioning and removal
- Turn magnet Off or at the mid-point when setting up, turn On when in final position
- Ideal for flat, round and square steel profiles
- Easy to clean, simply turn off and wipe

Part No.	Description	Price
WC-01885	MG22 90/45°	\$84.00
WC-01886	MG26 90°, 45° & 60/30°	\$169.00

FREIGHT CHARGES MAY APPLY



AIR TOOLS & WORKSHOP



1/4" DIE GRINDER

P/N: SI2002EX  
Free Speed: 27,000 RPM  
Weight: 0.37 kg

**\$269**  
LIGHTWEIGHT!



2" DISC SANDER KIT

Free Speed: 17,000 RPM  
P/N: SI2201

Includes ABRASIVE PADS!

**\$259**  
SUPER COMPACT!



10.2 MM AIR HAMMER

P/N: SI4120A



Includes FOUR 10.4 MM CHISELS!

Stroke: 10.0 mm  
Impact Rate: 2,600 OPM  
Weight: 1.60 kg

**\$279**  
SUPER COMPACT!

NEEDLE SCALER

P/N: SI4150EX

Arbor Type: 12 needle, 3 mm Dia.  
Impact Rate: 3,500 OPM  
Stroke Length: 4.5 mm  
Weight: 2.06 kg



**\$609**  
BUILT TOUGH!



FORGED STEEL RATCHET CLAMPS

- Comfortable non-slip handle makes it easier to achieve maximum clamping pressure
- Innovative ratchet system allows faster clamping in restricted working areas

Part No.	Span x Depth	Clamping Force	Price
EC-G30R	300x140mm	670kg	\$109.00
EC-G40R	400x175mm	700kg	\$139.00



FORGED STEEL F CLAMPS

- Premium quality forged steel clamps
- Tempered & hot forged steel
- Nickel & chrome plating

Part No.	Span x Depth	Clamping Force	Price
EC-G16CS	160x80mm	300kg	\$44.00
EC-G20CS	200x100mm	450kg	\$56.00
EC-G25CS	250x120mm	550kg	\$69.00
EC-G30CS	300x140mm	670kg	\$89.00
EC-G40CS	400x175mm	1000kg	\$115.00



PROFESSIONAL MECHANICS BENCH VICES

- Rugged all cast iron construction
- Integrated anvil for shaping and beating
- Extra heavy-duty sliding jaw and large diameter screw
- 50 ± 5 HRC hardened carbon steel jaws

Part No.	Jaw Width	Weight	Price
TM100-100	100mm	10.0kg	\$155.00
TM100-125	125mm	15.5kg	\$209.00
TM100-150	150mm	18.0kg	\$255.00

Abbott & Ashby

Heavy Duty Bench Vice

The flagship of the range - the Abbott & Ashby Heavy Duty Engineers vices are the perfect choice for the demanding work required in a professional engineering shop.

Part Number	Size (in/mm)	Jaw Opening (mm)	Weight (kg)	Price
ATBVHD125	5"/125	175	21	\$359.00
ATBVHD150	6"/150	203	23	\$429.00
ATBVHD200	8"/200	254	35	\$589.00

- 3xSTEEL ANVIL
- REGISTERED DESIGN
- 360° NO TOOLS ROTATION
- Abbott & Ashby 3 Year WARRANTY



GREAT VALUE!



\*Pedestal not included

- Unique to our range are our 3 integrated hardened steel anvils.
- Quick release function
- 360° swivel base for repositioning
- Heavy duty cast-iron base for increased strength
- Integrated pipe jaws



PUREGAS

- Own your gas bottle
- No waiting - exchange on the spot
- Pay for the gas only
- No rental or lease fees
- No contracts or admin fees
- No hidden or low use charges

ARGON | ARGON MIX | OXYGEN | ACETYLENE | CARBON DIOXIDE | NITROGEN



HOSE CLAMPS  
TRUSTED SINCE 1976





**COMPRESSORS**

**AIRMAC**



TA-65 Pump



At the heart of every Airmac is a genuine cast iron Fusheng compressor pump. Widely acknowledged as the best in the world.

**V13**

240V, 10 Amps  
1.65 kW (2.2 hp) Motor  
285 L/min Displacement  
185 L/min F.A.D  
60 Litre Tank

PORTABLE  
**\$1779**

FREE COVER



**T20-H**

240V, 15 Amps  
2.4 kW (3.2 hp) Motor  
475 L/min Displacement  
310 L/min F.A.D  
70 Litre Tank

WORKSHOP  
**\$2399**

FREE COVER

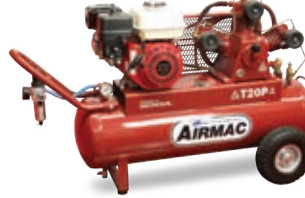


**T20P-H**

Honda 6.5 hp GX200  
490 L/min Displacement  
320 L/min F.A.D  
145 psi - Head Unloaders  
70 Litre Tank

FARM  
**\$3149**

FREE COVER



**T20P-120L**

Honda 6.5 hp GX200  
490 L/min Displacement  
320 L/min F.A.D  
145 psi - Head Unloaders  
120 Litre Pallet Feet Tank

SITE  
**\$3559**

FREE COVER



**G120**

**AIR COMPRESSOR**

- 7.5kW / 10.0HP, 415V TECO motor
- 1471 Lt/min Displacement
- 1030 Lt/min F.A.D.
- 3 Cylinder cast-iron pump
- 300 litre stationary tank
- Forklift feet



**\$5999**

CAST-IRON

**AFP70**

**AIR COMPRESSOR**

- Honda 13.0HP engine
- Auto Idle Control
- 509 Lt/min Displacement
- 419 Lt/min F.A.D.
- 2 Cylinder ABAC pump
- High pressure (160psi)
- 155 litre tank
- Forklift feet

POWERED BY HONDA



**\$6999**

HONDA ENGINE

**G16-HP**

**AIR COMPRESSOR**

- 2.4kW / 3.2HP motor
- 240V, 15Amp
- 410 Lt/min Displacement
- 328 Lt/min F.A.D.
- High pressure (160psi)
- 73 litre tank
- Filter/regulator
- Pneumatic wheels

**\$2199**

HIGH PRESSURE

160 PSI



BONUS 20M AIR HOSE

**\$2499**

PB17000P

**Peerless Black 17000 Petrol**

- Free Air Delivery: 320LPM
- Genuine Honda GX200
- 50L Air Receiver
- 3 year Honda warranty



BONUS 20M AIR HOSE

**\$1099**

PB14000

**Peerless Black 14000 Belt Drive**

- Free Air Delivery: 220LPM
- 2.5HP Single Phase motor - 10AMP
- 50L Air Receiver
- 1 year total unit warranty

**\$1999**

00257

**P14 Electric**

- Free Air Delivery: 275LPM
- 2.75HP Single Phase motor - 10AMP
- Fitted water trap filter regulator
- Slow revving cast iron pump - 852RPM
- 55L Air Receiver
- 5 year pump warranty



BONUS 20M AIR HOSE



BONUS 20M AIR HOSE

**\$2569**

00100

**PHP15 High Pressure**

- Free Air Delivery: 300LPM
- High pressure for truck tyre inflation
- 3.5HP Electric motor - 15AMP
- 55L Air Receiver
- Warranty: 5 year pump warranty



BONUS 20M AIR HOSE

**\$4100**

00555

**PV25 Three Phase**

- Free Air Delivery: 545LPM
- Perfect for 2-3 man workshop
- 5.5HP Electric motor - 415V
- 110L Fatboy Air Receiver
- Warranty: 3 year pump warranty



**\$9,350**

HQE7.5VSH-110

BONUS 20M AIR HOSE

**7.5HP Variable Speed Screw Compressor**

- Free Air Delivery: 650LPM
- High pressure for truck tyre inflation
- 99% Duty cycle for constant use
- Save money and power with V/S
- 110L Air Receiver
- Warranty: 1 year total unit & 5 year airend



**PRESSURE WASHERS, HEATERS & WORKSHOP**

**MAINE 1409 XP**

- 2600 PSI Operating pressure
- 9 LPM flowrate
- 2.40KW Universal 240V
- Industrial Spray Lance & Gun
- Suction and Delivery Stainless Steel Valves
- Integrated Detergent Suction with External Suction Hose
- 10 Metre R1 Steel Braided High Pressure Hose

P/N: 8.673.0012

**\$999**  
SUPER SAVINGS!

**VERTIGO28**

- Max. Pump Pressure 2320 PSI
- Flowrate 8.5 LPM
- Induction motor 2400W
- 10 mt. nylon reinforced HP hose
- Turbo nozzle plus 4 QR nozzles
- Onboard detergent tank

P/N: 8.047.0063

**\$799**  
GREAT PRICE!

**TradeSmart MATES RATES!**

**FF175**

- Diesel heater
- 175,000 BTU (51.3KW) of heat
- Heating area 400 sqm
- Fuel tank 49 litres
- Operating hours 10 hrs
- Thermostat controlled

P/N: 8.700.0005

**\$869**  
BEST PRICE!

FAN FORCED

**LAVOR**  
SIMPLY STRONGER  
www.lavorwash.com.au

**PT70SS PLUS**

- Radiant diesel heater (21KW, 70000 BTU)
- Heating area capacity 200m2 (approx.)
- Fuel tank capacity 15 litres
- Non continuous spark for quiet operation
- Diesel consumption 1.9 lt./h (7hrs)
- Thermostat control for maximum efficiency
- Optional Trolley separate

P/N: 8.700.0001

**OPTIONAL TROLLEY: \$119**  
P/N: PT70TWK

**\$849**  
RED HOT DEAL!

**Holemaker**  
Drilling Solutions by ITM®

**PRO 35 18V CORDLESS MAGNETIC BASE DRILL**

- Cordless, Compact & lightweight European Made Machine
- 18V Brushless motor technology
- CAS Battery platform
- Ideal for onsite & overhead tasks
- Unique dual rail slide system increases machine rigidity and improves cutter life
- Includes 14, 18, 22mm cutters & pin
- Includes 4AH lithium ion battery
- Includes charger

**\$2799.00**

GREAT VALUE!

HMPRO35-18VK1



**Holemaker**  
Drilling Solutions by ITM®

**PRO 42 18V CORDLESS MAGNETIC BASE DRILL**

- Durable & Versatile European Made Machine
- Lightweight, only 12.5kg
- Large 165mm stroke
- Capacity (diameter) 42mm
- Capacity (depth) 52mm
- Gravity feed coolant system
- Optional twist drill chuck

**\$1999.00**

GREAT VALUE!

HMPRO42



**350MM COLD CUT SAW PRO KIT - CERMET**

- ✓ Stainless Steel ✓ Mild Steel ✓ Aluminium
- ✓ Thin Material ✓ Thick Material
- 2 Blade kit
  - 66 tooth T.C.T. blade
  - 110 tooth cermet carbide blade for stainless steel
- Saves time & money giving cool cuts that need little to no finishing
- Fully enclosed retractable guard
- Heavy-duty vice: 90° - 45°
- Pipe vice attachment
- Max. material size:
  - 90°: 120 x 120mm
  - 45°: 120 x 90mm

**\$1095.00**

GREAT VALUE!

S14-PROKIT

**Multitool 200MM, 750 WATT BENCH GRINDER**



- Powerful; 750W (1hp) induction motor
- Cast iron body and base for long lasting performance
- Capacitor start / run motor
- NVR safety switch
- Large eye shields for added user safety
- Heavy-duty tool rests

**\$369.00**

GREAT VALUE!

PO200HD

**Multitool BELT & DISC GRINDING ATTACHMENTS**

- Belt size: 915 x 50mm
- Suits most bench grinders
- Ideal for sharpening, sanding, polishing & more
- 178mm sanding disc



**\$269.00**

GREAT VALUE!

PO362

- Belt size: 1220 x 50mm
- Suits most 200mm & 250mm bench grinders
- Ideal for sharpening, sanding, polishing & more
- 178mm sanding disc



**\$600.00**

GREAT VALUE!

PO482

- Belt size: 1220 x 100mm
- Suits most 200mm & 250mm bench grinders
- Ideal for sharpening, sanding, polishing & more
- 178mm sanding disc



**\$695.00**

GREAT VALUE!

PO484

**ITM EMERGENCY STOP BENCH GRINDER STAND**

- Industrial Bench Grinder Stand for use with most 200mm and 250mm bench grinders
- Excellent work height for comfortable extended use
- Heavy-duty steel construction
- Pre-slotted top plate for multi-fit applications
- Pre-drilled base plate for easy mounting
- Heavy-duty powder coat finish
- Height: 855mm



**\$259.00**

GREAT VALUE!

TM403-018

**Multitool BENCH GRINDER WITH MULTITOOL BELT ATTACHMENT**



- Powerful 600W motor
- Capacitor start for maximum performance
- 915mm x 50mm belt
- 178mm disc
- 200 x 25mm grinding wheel
- Durable cast iron body
- Heavy duty tool rest

**\$499.00**

GREAT VALUE!

PO362-200

**Multitool MITRE TABLE ATTACHMENT**



**\$139.00**

GREAT VALUE!

POMTA

- Suitable for grinding ends square and adjusting lengths and angles
- For use with all Multitool models
- Table can be tilted up 5°, down 50°
- Table size 110 x 204mm

# HOT DEALS STORE WIDE

AUTO



## Professional Jumper Leads

- Antizap booster cables are guaranteed to protect against voltage spikes

Part No.	Length	Size	AMP Cap	Price
MA254AZ	4m	25mm <sup>2</sup>	600	\$135.00
MA506AZ	6m	50mm <sup>2</sup>	900	\$289.00



## Battery Booster Clamps 600AMP

MA17C

- Fully insulated
- Thick gauge pressed metal

**\$19<sup>95</sup>**  
GREAT VALUE!

**\$179<sup>00</sup>**  
GREAT VALUE!

## Cable Lug Assortment Pack

MAGPL2

- 10 pieces of: MA25-8, MA25-10, MA35-8, MA35-10, MA35-12, MA50-10, MA50-12
- 5 pieces of: MA70-10, MA70-12, MA95-12



## Terminal Assortment Pack

MABTP50

- Selection of 50 popular terminals and 3 pairs of covers

**\$249<sup>00</sup>**  
GREAT VALUE!



## Lithium Jump Starter 12V/24V

MA35000

**\$537<sup>00</sup>**  
GREAT VALUE!

- Automatic Voltage Sensing
- Peak Current 1200A (12V)
- 35000mAh Capacity
- Back-up power for portable devices



## 6/12/24 Volt Charger

IR61224

- Selectable Amp and voltages
- Electronic touch button control
- GEL, Flooded (SLA, Deep Cycle, AGM), Calcium

**\$325<sup>00</sup>**  
GREAT VALUE!



## 4 in One Charger

MA41N0NE

- Four different charge voltage settings 12/24/36/48Volts
- Fully automatic Switch Mode charging and maintenance capabilities

**\$599<sup>00</sup>**  
GREAT VALUE!



**\$269<sup>00</sup>**  
GREAT VALUE!

## 10AMP 12VDC Battery Charger

AE1000E

- Lithium compatible
- IP65 waterproof and dustproof
- Chemistry selectable including Lithium (LiFeP04)
- Variable output

ALL STATES  
**TRAILER SPARES**  
*TUFF STUFF*

## Jockey Wheels | Towball Mounts

### Towball Mount

2T 250mm (L) 185mm (D)



ADJUSTABLE

**\$89<sup>00</sup>**  
#R721187

### Towball Mount

2.7T 165mm (L) 80mm (D)



**\$79<sup>00</sup>**  
#R721196

### 6" Heavy Duty Jockey Wheel

Swivel  
Ubolt Clamp  
750kg



**\$119**  
#R2112HD

### 8" Heavy Duty Jockey Wheel

Swivel  
Ubolt Clamp  
750kg



**\$145**  
#R2124HD

### 2/3 Hole Coupling

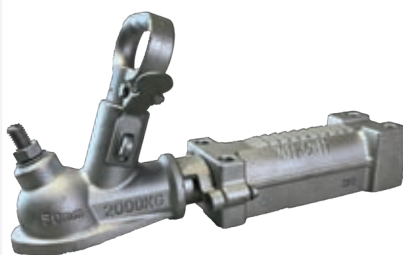
50mm 2TN Dacromet



**\$49<sup>00</sup>**  
#R1803A

### Override Coupling

50mm 4 Hole 2TN Dacromet



**\$119**  
#R1809A

### Coupling Lock

Anti-Theft with lock



**\$49<sup>00</sup>**  
#R1103

### Jockey Wheel U Bolt Fitting kit



**\$9<sup>95</sup>**  
#R14776

Suit 50mmx50mm drawbar

**\$10<sup>95</sup>**  
#R14796

Suit 75mmx50mm drawbar

**\$11<sup>95</sup>**  
#R14786

Suit 100mmx50mm drawbar

**Champion**  
FASTENERS

**ASSORTMENT KITS**  
HOLDING AUSTRALIA TOGETHER SINCE 1968

LUBRICATION & REELS



**BOP 205L STARTER KIT**  
**BP205S-UNA**

- Pump stem, Power Head, 2m Hose and gun assembly, battery pack and charger included in starter kit
- Suitable for most 60-205 litre drums

**\$629**  
GREAT VALUE!

**2**  
YEARS  
MACNAUGHT  
WARRANTY



**BOP 205L STEM KIT**  
**BP205X-UNA**

- Pump stem, 2m Hose and gun assembly only
- Suitable for most 60-205 litre drums

**\$269**  
GREAT VALUE!

**2**  
YEARS  
MACNAUGHT  
WARRANTY



**POWERGUN**

**BATTERY OPERATED GREASE GUN**  
**PG450**

- Dispense up to 12x grease cartridges per charge free flow
- 2x 18V 3.0Ah Lithium-ion Rechargeable Battery Packs and charger
- Supplied with 1m long flexible extension and KY Supergrip coupler

**\$575**  
GREAT VALUE!

**2**  
YEARS  
MACNAUGHT  
WARRANTY



**BOP IN-LINE METER**  
**IM012EB-01**

- Flow Range: up to 10L/m
- Operating Pressure: 20 psi
- Specifically designed for the BOP range of battery operated pumps

**\$135**  
GREAT VALUE!

**2**  
YEARS  
MACNAUGHT  
WARRANTY



**20L OIL PUMP PREMIUM WITH HOSE & NON DRIP NOZZLE**  
**L-DP20P**

- Delivery up to 65ml per stroke
- Tube extender to suit different height 20-25L drums

**\$55**  
GREAT VALUE!

**12**  
MONTHS  
MACNAUGHT  
WARRANTY



**C1 COMPRESSED AIR/WATER REEL**

- Hybrid polymer hose for the ultimate flexibility, to lay flat and prevent tangles or kinking under pressure
- Working Pressure: 250 psi
- 1.5m Feed hose included

**C1AW315B-01CB**  
10mm (3/8") x 15m

**\$249**  
GREAT VALUE!

**C1AW412B-01CC**  
12mm (1/2") x 12m

**\$290**  
GREAT VALUE!



**2**  
YEARS  
MACNAUGHT  
WARRANTY

**R3 GARDEN WATER REEL**

- Garden/Horticultural
- Outlet - Hose connector
- Working Pressure: 150 psi

- **DR418D-03** 1/2" x 18m
- **DR418P-03** 1/2" x 18m
- **DR418G-03** 1/2" x 18m

**\$329**  
GREAT VALUE!



**10**  
YEARS  
MACNAUGHT  
WARRANTY

**12V ELECTRIC DIESEL PUMP KIT AUTO NOZZLE**  
**AFP12A**

- Flow rate up to 40 LPM
- Suitable for diesel use only
- 12V or 24V options available
- Supplied with 4m long delivery hose, 2m long suction hose and fittings

**\$649**  
GREAT VALUE!



**5**  
YEARS  
MACNAUGHT  
WARRANTY

**12V ELECTRIC DIESEL PUMP KIT MANUAL NOZZLE**  
**AFP12M**

- Flow rate up to 40LPM
- Suitable for diesel use only
- 12V or 24V options available
- Supplied with 4m long delivery hose, 2m long suction hose and fittings

**\$629**  
GREAT VALUE!



**5**  
YEARS  
MACNAUGHT  
WARRANTY

**MECHANICAL DIESEL METER**  
**AMFM**

- Flow range 20 - 120LPM
- Suitable for diesel, kerosene and light oils
- Inlet/Outlet - 1" BSP (F)

**\$379**  
GREAT VALUE!

**5**  
YEARS  
MACNAUGHT  
WARRANTY



**ROTARY VANE PUMP**  
**RVP-01**

- Suits both 205 & 60 L drums via sliding bung adaptor
- Delivers up to 20 LPM (in both directions)
- Suitable for Diesel, Kerosene and oils up to SAE90

**\$319**  
GREAT VALUE!

**10**  
YEARS  
MACNAUGHT  
WARRANTY



**ROTARY VANE PUMP**  
**L-RPH**

- Delivers up to 20 LPM
- Suitable for diesel, kerosene and mineral oils up to SAE90
- 1.8m long delivery hose with delivery nozzle

**\$149**  
GREAT VALUE!

**12**  
MONTHS  
MACNAUGHT  
WARRANTY



Terms & Conditions: \*Stock Subject to availability. While stocks last. Pricing is valid from 1st July - 30th September 2024. Warranty subject to Macnaught Terms & Conditions. ©Macnaught Pty Ltd, 2024.

macnaught.com



AUSTRALIA'S FIRST CHOICE FOR QUALITY HOSE, VALVES AND FITTINGS





# QUALITY WORKSHOP EQUIPMENT



## BR50010D

### EL SERIES DANGER SAFETY BARRIER REEL

- Provides a temporary barrier to clearly identify dangerous areas in the workplace or public environments
- Supplied with 16m of red/white band with fixed-handle
- Automatic spring rewind mechanism



**\$209.00**  
GREAT VALUE!

**BR50020D** Also available:  
El Series Caution Safety Barrier Reel **\$219.00**

## GET YOURSELF A REEL DEAL!

### EL SERIES HIGH CAPACITY OIL, GREASE, DIESEL & AIR REELS

PRODUCT NO.	PRODUCT DESCRIPTION	DIMENSIONS	PRICE
HR90005	EL SERIES 1" DIESEL, AIR & WATER SPRING REWIND HOSE REEL	30M X 25MM	<b>\$1,999.00</b>
HR90010	EL SERIES 1" DIESEL, AIR & WATER SPRING REWIND HOSE REEL	15M X 25MM	<b>\$1,699.00</b>
HR90015	EL SERIES AIR & WATER SPRING REWIND HOSE REEL	8M X 25MM	<b>\$1,099.00</b>
HR90020	EL SERIES 3/4" AIR & WATER HOSE REEL	40M X 19MM	<b>\$2,499.00</b>
HR90025	EL SERIES AIR & WATER SPRING REWIND HOSE REEL	20M X 19MM	<b>\$1,899.00</b>
HR90030	EL SERIES AIR, WATER & FUEL SPRING REWIND HOSE REEL	12M X 19MM	<b>\$1,099.00</b>
HR90035	EL SERIES 1/2" AIR & WATER HOSE REEL	50M X 12MM	<b>\$2,099.00</b>
HR90040	EL SERIES AIR, WATER & FUEL SPRING REWIND HOSE REEL	30M X 12MM	<b>\$1,499.00</b>
HR90045	EL SERIES AIR & WATER SPRING REWIND HOSE REEL	25M X 12MM	<b>\$1,179.00</b>
HR90050	EL SERIES 1" OIL, FUEL & WASTE OIL SPRING REWIND HOSE REEL	15M X 25MM	<b>\$2,229.00</b>
HR90055	EL SERIES 3/4" OIL, FUEL & WASTE OIL SPRING REWIND HOSE REEL	20M X 19MM	<b>\$1,899.00</b>
HR90060	EL SERIES 1/2" OIL, AIR & WATER SPRING REWIND HOSE REEL	30M X 12MM	<b>\$1,699.00</b>
HR90065	EL SERIES OIL, FUEL & WASTE OIL SPRING REWIND HOSE REEL	25M X 12MM	<b>\$1,299.00</b>
HR90070	EL SERIES OIL SPRING REWIND HOSE REEL	30M X 10MM	<b>\$1,699.00</b>
HR90075	EL SERIES GREASE SPRING REWIND HOSE REEL	25M X 10MM	<b>\$1,299.00</b>

## F20060

### HI-FLO REFUELLING DRUM PUMP

- Delivery rates of up to 100L/min
- Heavy duty machined bung adaptor
- Nozzle, nozzle holster & superior grade hose



**\$295.00**  
GREAT VALUE!

## 8828N2

### ALEMLUBE 20L ENGINE & GEAR OIL DRUM PUMP

- Delivers up to 110mL per stroke
- Downtube extension & extra Rieke adaptor make the pump suitable for use with a variety of 20L drums available on the market



**\$79.00**  
GREAT VALUE!

## 14512

### ALEMLUBE QUICK CONNECT GREASE GUN COUPLER

- Works with all grease gun types - pneumatic, manual and battery
- 1/8" BSP(f) thread
- Maximum working pressure of 10,000psi (690 bar)

**14511** Also available:  
1/8" NPT(f) thread  
**\$55.00**



**\$37.95**  
GREAT VALUE!

## 454003N

### OIL TRANSFER KIT WITH ON/OFF GUN

- 1:1 ratio pump capable of delivery rates of up to 15L/min
- Ideal for the transfer of engine, diff & hydraulic oils in busy vehicle servicing workshops
- Includes 3m of R1 hose, heavy duty oil control valve complete with genuine non drip nozzle & bung adaptor



**\$1,219.00**  
GREAT VALUE!

## 660AN

### ALEMLUBE 450g TRIGGER ACTION GREASE GUN

- Grease pressures of up to 8,500psi (586bar)
- Delivers up to 1.1g of grease per stroke
- Unique Twin-Lock System seals the piston & eliminates the possibility of dummy lubrication



**\$149.00**  
GREAT VALUE!

## G10020N

### EL SERIES LEVER ACTION GREASE GUN

- Grease pressures of up to 8,000psi (552bar)
- Delivery rates of up to 0.95g per stroke
- Robust die cast head assembly
- Heavy duty 4 jaw coupler



**\$46.95**  
GREAT VALUE!

## 630A

### SAMOA 20V LITHIUM-ION 450g CORDLESS GREASE GUN

- Grease pressures up to 7,250psi (500bar)
- Adjustable delivery rates of 100g/min or 160g/min
- Able to dispense up to 16 cartridges before battery recharge is required (free flow)



**\$719.00**  
GREAT VALUE!



\*Applies to the vast majority of Alemlube products unless indicated otherwise. Prices are inclusive of GST.



Engineered To Perform  
[hi-tecoils.com.au](http://hi-tecoils.com.au)



STORAGE & CASTORS



**FOLDABLE CRATES**

P/N: FB5336B

Stackable in both collapsed & extended configurations.

Size: 535W x 360D x 280H MM  
Collapsed Height: 50 MM



**\$51**  
FUNCTIONAL!

**HB HANGING PANEL KIT**



WALL MOUNTABLE!

Blue P/N: HP1KITB  
Red P/N: HP1KITR

Panel size: 605W MM x 455H MM x 8D MM  
Bin size: 105W MM x 137D MM x 76H MM

**\$245**  
40 BIN KIT!

**PIVOT DRAWER SETS**



8 Bin Drawer  
P/N: FO308

**\$38**  
GREAT VALUE!

5 Bin Drawer  
P/N: FO605

**\$52**  
GREAT VALUE!

8 Bin Drawer size: 300W x 67D MM x 250H MM  
5 Bin Drawer size: 600W MM x 103D MM x 150H MM

**32L BLACK STACK & NEST CRATE**

SNR004RWCBLK

Made from tough and reliable recycled plastic



**\$19.95**  
INC. GST

**52L BLACK STACK & NEST CRATE**

SNR001RWCBLK

Made from tough and reliable recycled plastic



**\$23.95**  
INC. GST

**68L BLACK STACK & NEST CRATE**

SNR009RWCBLK

Made from tough and reliable recycled plastic



**\$29.95**  
INC. GST

**LUG BOXES 610 X 425 X 320MM**

AVAILABLE COLOURS:

- BK008RWCBLU
- BK008RWCORA
- BK008RWCBLK
- BK008RWCRED
- BK008RWCGRN
- BK008RWCVEL



- 2.5kg weight  
- Made from food grade HDPE

**\$29.95**  
INC. GST

**240L WHEELIE BINS**

- Made from HDPE  
- External Dimensions: 582 x 740 x 1072mm



**\$125.00**  
INC. GST

AVAILABLE COLOURS:

- WCR028
- WCR031
- WCR033
- WCR030
- WCR029
- WCR032

**SEAL CASE WEATHERPROOF EQUIPMENT CASE 470 X 357 X 176MM**

SEALCASE470

- Watertight and dust proof - rated to IP65.  
- Pick-apart and solid foam inserts for impact-absorbing protection



**\$70.00**  
INC. GST

**SEAL CASE WEATHERPROOF EQUIPMENT CASE 616 X 493 X 220MM**

SEALCASE616

- Watertight and dust proof - rated to IP65.  
- Pick-apart and solid foam inserts for impact-absorbing protection



**\$165.00**  
INC. GST

**SEAL CASE WEATHERPROOF EQUIPMENT CASE 1127 X 406 X 155MM**

SEALCASE1127

- Watertight and dust proof - rated to IP65.  
- Pick-apart and solid foam inserts for impact-absorbing protection



**\$235.00**  
INC. GST

**150MM RIGID 225KG RUBBER CASTOR R6631**

- 225kg maximum load capacity  
- 150mm wheel diameter  
- Non marking, energy absorbent wheels.



**\$59.95**  
INC. GST

**150MM SWIVEL 225KG RUBBER CASTOR S6632**

- 225kg maximum load capacity  
- 150mm wheel diameter  
- Non marking, energy absorbent wheels.



**\$67.95**  
INC. GST

**150MM SWIVEL LOCK & BRAKE RUBBER CASTOR S6632SLB**

- 225kg maximum load Capacity  
- 150mm wheel diameter  
- Swivel lock & brake  
- Non marking, energy absorbent wheels.



**\$79.95**  
INC. GST



**WORK PLATFORM ALUMINIUM 150KG INDUSTRIAL**

**\$219**  
MW105-1450WB (0.6-0.9M)



**PAINTING PLATFORM ALUMINIUM 120KG INDUSTRIAL**

**\$169**  
MW105-CWB (0.6-0.9M)



**GORILLA ALUMINIUM EXPANDA SCAFF**

**\$1,479**  
GS-01 CORE PACK



The Expanda Scaffold incorporates a unique design that allows you to expand up and out by adding additional free standing core packs, making it incredibly versatile.

**\$929**  
GS-01A RISER PACK



**ALSO AVAILABLE**  
GS-02 SCAFFOLD OUTRIGGER PACK \$459  
GS-03 SCAFFOLD JOINER PACK \$376

**MULTI-PURPOSE LADDER ALUMINIUM 120KG INDUSTRIAL**

**\$309**  
MM11-I (A-FRAME 0.9-1.5M)

**NEW**



**ALSO AVAILABLE**  
MM15-I (A-FRAME 1.2-2.1M, EXTENSION 2.7-4.5M) \$359  
MM19-I (A-FRAME 1.5-2.7M, EXTENSION 3.3-5.8M) \$549

**DUAL PURPOSE ALUMINIUM INDUSTRIAL 180KG HEAVY DUTY**

**\$379**  
DM008-HD (1.8-3.3M/6-11FT)



**ALSO AVAILABLE**  
DM007-HD (2.1-3.9M/7-13FT) \$419  
DM008-HD (2.4-4.5M/8-15FT) \$499

**FORMWORK PROPS GALVANISED STEEL**

**\$139**  
PROP-198 (1.98-3.35M)

Gorilla Formwork Props are a must for almost every building site. The adjustable load bearing product is ideal for supporting ceilings, walls and other structures.

**NEW PROP-069** WLL: 2900kg (0.69m) 2200kg (1.16m)  
**PROP-120** WLL: 2600kg (1.2m) 2300kg (1.8m)  
**PROP-198** WLL: 3000kg (1.98m) 1400kg (3.35m)  
**PROP-230** WLL: 2600kg (2.3m) 1300kg (3.8m)

**ALSO AVAILABLE**  
**NEW PROP-069** (0.69-1.16M) \$79  
**PROP-120** (1.2-1.8M) \$106  
**PROP-230** (2.3-3.8M) \$159



**HANDS FREE LIGHTING FOR WORK, INSPECTION OR PLAY**

**440 LUMENS POLYSTEEL SWIVEL LED TORCH COAPS400S**



Lumens: High 440  
Beam: High 210m  
Runtime: Low 27h

- Magnetic Tail Cap
- Indestructible POLYSTEEL
- Drop, Crush & Storm proof

**\$79<sup>00</sup>**  
GREAT VALUE!

**1000 LUMENS RECHARGEABLE LED HEADLAMP COAXPH30R**



Lumens: Turbo 1000 | High 490  
Beam: Turbo 165m | High 112m  
Runtime: Low 41h

- Magnetic Tail Cap
- Pro-Tek Charging (AC,DC,USB)
- Removable Headlamp

**\$179<sup>00</sup>**  
GREAT VALUE!

**1150 LUMENS RECHARGEABLE PORTABLE WORK LIGHT COAWLR1**



Lumens: High 1150  
Beam: High 77m  
Runtime: Low 13h

- Collapsible Handle, 180-degree rotation
- USB power out charge other devices
- Dual Power (Li-Ion) & AC/DC cord

**\$149<sup>00</sup>**  
GREAT VALUE!

**INSPECTION BEAM LED PENLIGHT COAG20**



Inspection Beam Optic  
Beam: High 21m  
Runtime: Low 11h

- Alkaline Dual Power
- Detail revealing anti-glare light
- Drop, Crush & Storm proof

**\$19<sup>95</sup>**  
GREAT VALUE!

**P10 & P20 MARKERS**

- High performance paint markers.
- Xylene-free, fast dry formula.
- Bold, easy to read marks.

**GREAT VALUE!**



**\$5<sup>95</sup>**  
INC GST  
EACH

WHITE: P/N: 12071011

**P10 MARKERS**

- High performance paint marker
- Xylene-free, fast dry formula
- Replaceable, heavy duty tips
- Bold, easy to read marks



**\$6<sup>95</sup>**  
INC GST  
EACH

YELLOW: P/N: 12072005

**P20 MARKERS**

- Reversible bullet/chisel tip
- Xylene-free, fast dry formula
- Replaceable, heavy duty tips
- Bold, easy to read marks



**MORE COLOURS AVAILABLE: P10**

- BLACK - P/N: 12071001
- RED - P/N: 12071002
- YELLOW - P/N: 12071005

**MORE COLOURS AVAILABLE: P20**

- BLACK - P/N: 12072001
- RED - P/N: 12072002
- BLUE - P/N: 12072003
- GREEN - P/N: 12072004
- PINK - P/N: 12072009
- WHITE - P/N: 12072011



**MARXMATE**  
PROFESSIONAL MARKING TOOL

**THE PERFECT DRILLING COMPANION**

FOR ELECTRICAL, PLUMBING, BUILDING AND DIY MARKING JOBS

**\$13.25**

**250+**  
BURSTS  
IN EVERY PEN

USE ON DEPTHS UP TO 50mm



DRILL IT MARK IT PRESS IT

# ADHESIVES, SEALANTS & PAINT

## Rapidstick INSTANT ADHESIVES

COMPATIBLE WITH ROUGH, POROUS & ACIDIC SURFACES

FAST CURING, HIGH STRENGTH BOND

### 8401 - SURFACE INSENSITIVE

- Ideal for repair applications
- Medium viscosity
- Fills gaps up to .20mm

SIZE	P/N
50g	8401-50
50g	8406-50

### 8406 - WICKING GRADE

- Rubber & metal bonding
- Low viscosity
- Fills gaps up to .05mm

50G BOTTLES  
**\$17.95**



## Rapidstick THREAD SEALANTS

50ML TUBES  
**\$21.95**

### 8567 - HIGH LUBRICATION & COARSE FITTINGS

- For all metal types, incl. s/steel, aluminium, & galvanised metals.
- Temps up to +204°C
- Contains PTFE
- Colour: White

SIZE	PART #
50ml	8567-50

### 8577 - POTABLE WATER & GASES

- Soft setting paste
- Class III methacrylate ester
- Contains PTFE
- Pressures up to 2,000 kPa
- Colour: Yellow

SIZE	PART #
50ml	8577-50



AGA CERTIFIED FOR GAS



## Rapidstick THREADLOCKERS

TOLERATES MINOR SURFACE CONTAMINATION

### 8243 - BLUE

- Medium & coarse threads
- Plated parts & stainless steel
- Non-permanent bond
- Fills gaps 6mm - 20mm

### 8263 - RED

- Large bolts & studs
- Active or passive metals
- Permanent bond
- Fills gaps up to 25mm

GREAT CONTROLLED FRICTION & TORQUE/TENSION RATIO

SIZE	P/N
50ml	8243-50
50ml	8263-50

50ML BOTTLES  
**\$19.50**



## Rapidstick RS-80 HI TEMP GASKET MAKER

- MOST SURFACES
- AUTOMOTIVE
- INDUSTRIAL
- MARINE
- INDOORS & OUT

**\$34.90**  
ALL COLOURS



OXYGEN SENSOR SAFE

- New generation low odour RTV
- Neutral curing & non-corrosive - does not release acids
- For demanding applications with extreme temperatures and/or high thermal cycling
- Retains flexibility up to 300°C
- Resistant to oil, water & most chemicals
- Suitable on sensitive metals & most non-primed surfaces

BLACK	8-RS80BK-200
RED	8-RS80RD-200
GREY	8-RS80GY-200

Special resin & pigment system provides the best quality paint for colour visibility, retention & lasting durability

### 350G FLURO COLOURS

PINK	CT-SP-350FP
YELLOW	CT-SP-350FY
GREEN	CT-SP-350FG
BLUE	CT-SP-350FB
ORANGE	CT-SP-350FO

\*Visibility varies with traffic & exposure

## SPOT IT SURVEY MARKING PAINTS

CONSTRUCTION · ROAD · LANDSCAPING



- Touch dry in 5 minutes
- Excellent colour retention for up to 6 months\*
- Non-freezing & operational to -10°C
- No added lead or chlorinated solvents
- Non-clogging can empties completely
- High delivery for faster and better coverage
- Vivid colours

SPOT MARKED AT  
**\$9.95**

## Rapidstick RS-60 ALL-IN-ONE SILICONE SEALANT

UV RESISTANT

CONSTRUCTION GRADE · LIFETIME PERFORMANCE

- High performance in harsh environments
- Highly adhesive & extremely durable
- Water resistant
- Apply to primed or unprimed surfaces
- Anti-fungal

300ML CARTRIDGE	
BLACK	8-RS60BK-300
CLEAR	8-RS60CL-300
GREY	8-RS60GY-300
WHITE	8-RS60WT-300
SILVER	8-RS60SV-300

ALL COLOURS  
**\$7.95**



## GalMax 90 COLD GAL PAINT & PRIMER

99% ZINC PURITY - 90% ZINC IN DRY FILM

- Weld through rust-proof matte finish primer
- Can be used in marine environments
- Exceptional corrosion protection on clean steel



## GalMax SG SILVER GAL PAINT

3-IN-1: PROTECT - MATCH - SEAL

- Fast drying formula
- 99% zinc purity
- Premium rust & corrosion protection
- Weathers to the same colour as normal galvanising



400G AEROSOLS  
**\$11.80**

PRODUCT	PART NO
Cold Gal 90	CT-CG-400
Silver Gal SG	CT-SG-400



## GalMax COLOURED GALVANISING PAINTS

DIRECT TO METAL CORROSION PROTECTION

- Excellent adhesion to multiple surface types
- Smooth & durable rust-fighting finish
- Can be applied with or without primer
- Use extensively to maintain or restore
- Great for fresh welds

### 400G AEROSOL

Red	CT-RSG-400
Yellow	CT-YSG-400
Black	CT-BKSG-400
Orange	CT-OSG-400
White	CT-WSG-400
Blue	CT-BLSG-400
Matte Black	CT-MBKSG-400

ALL COLOURS  
**\$11.80**



L to R:  
Red (RSG), Safety Yellow (YSG), Black (BSG), Orange (OSG), White (WSG), Steel Blue (BLSG), Matte Black (MBKSG)



# HOT DEALS STOREWIDE!

## SEALANTS & CHEMICALS

### SOUDAL

EXPERT IN SEALANTS, FOAMS AND ADHESIVES



#### ROOF & GUTTER SILICONE

- Grey 127778
- Translucent 127779

300ML  
**\$5.95**  
GREAT VALUE!



#### ALL PURPOSE SILICONE

- Alabaster 121671
- Aluminium 121660
- Beige 121663
- Black 121995
- Brilliant White 121661
- Cement Grey 131649
- Charcoal 121668
- Dark Grey 121666
- Grey 121665
- Ivory 121664
- Medium Grey 131648
- Misty Grey 144928
- Moss Green 144558
- Pewter 121667
- Stone 121669
- Taupe 127786
- Titanium 127785
- Translucent 121662

300ML  
**\$7.50**  
GREAT VALUE!



#### BATHROOM & KITCHEN SILICONE

- Grey 154228
- Translucent 127784
- White 127783

300ML  
**\$5.95**  
GREAT VALUE!

**\$8.95**  
INC GST

GREAT VALUE!

#### MULTI-PURPOSE LUBRICANT

- A MULTI-USE PRODUCT THAT PENETRATES, LUBRICATES, PROTECTS AND DISPLACES MOISTURE.
- INNOVATIVE 2 WAY ACTUATOR WITH LOCKING TAB.

P/N: 42034002



**\$11.95**  
INC GST

GREAT VALUE!

#### SILICONE LUBRICANT

- A HIGH PERFORMANCE MULTI-PURPOSE SILICONE SPRAY THAT PROTECTS, WATERPROOFS AND LUBRICATES.
- INNOVATIVE 2 WAY ACTUATOR WITH LOCKING TAB.

P/N: 42033501



**\$16.95**  
INC GST

GREAT VALUE!

#### CONTACT CLEANER FLAMMABLE

- A STABLE, INERT, HIGH PURITY CLEANING SOLVENT.
- IT DRIES QUICKLY AND LEAVES NO RESIDUE.
- NON-CORROSIVE, NON-STAINING AND CONTAINS NO LUBRICANTS.

P/N: 42033502



**\$8.95**  
INC GST

GREAT VALUE!

#### BRAKE & PARTS CLEANER

- FORMULATED FOR THE RAPID AND SAFE REMOVAL OF BRAKE FLUID, GREASE, OIL AND OTHER CONTAMINANTS FROM BRAKE LININGS, PADS, DRUMS AND OTHER METAL PARTS.

P/N: 42035001



#### DRY GRAPHITE LUBRICANT

- A MULTI-PURPOSE DRY POWDER LUBRICANT THAT PROVIDES LUBRICATION TO SURFACES WHICH REQUIRE UNHINDERED SLIDING CAPABILITY.

**\$16.95**  
INC GST

GREAT VALUE!

P/N: 42031502



**\$24.95**  
INC GST

GREAT VALUE!

P/N: 42034006

#### ELECTRICAL PARTS CLEANER

- A CLEANER/DEGREASER FOR USE ON ELECTRICAL EQUIPMENT.
- IT DRIES QUICKLY AND LEAVES NO RESIDUE.
- NO FLASH POINT/NO FIRE POINT.



#### CRC 5-56 5005

- Moisture eliminator for wet equipment
- Moisture barrier to prevent trouble before it starts

**\$9.95**

INC GST 400g



#### CRC GLASS CLEANER 3070

- Professional strength
- Foaming
- Clings to vertical surfaces & minimizes run-off

**\$13.95**

INC GST 500g



#### CRC PENETR8 5501

- Extreme penetrating action
- Improves performance and operating efficiency

**\$22.75**

INC GST 400g



#### CRC NATURAL DEGREASER 3076

- Unique Biodegradable heavy duty cleaner/degreaser
- Leaves no residue
- Prevents harmful build up on equipment

**\$17.95**

INC GST 400g



www.crcindustries.com.au



### METAL ARMOUR

1754703 | 350g & 1754729 | 1L

- Zinc Rich Primer and Sealer
- Contains 85% zinc in dry film
- Bonds directly to bare metal or most surfaces, including painted surfaces -
- Ready to paint or leave uncoated



350g

**\$25.00**

INC GST



1L

**\$105.00**

INC GST

### RUST CONVERTER

3073 | 250ml - 18418 | 1L - 3075 | 5L & (Aerosol) 14610 | 425g

- Ready to Use - No additional mixing or chemical additives required
- One easy step - Instantly neutralises rust and converts it to an excellent tough black primer



250ml

**\$18.00**

INC GST



1L

**\$56.95**

INC GST



5L

**\$185.00**

INC GST



425g

**\$19.95**

INC GST



www.crcindustries.com.au



FREIGHT CHARGES MAY APPLY



HEIGHT SAFETY & MATERIAL HANDLING

HEIGHT SAFETY



**B-SAFE FALL ARREST HARNESS WITH WEB LANYARD**

Code: BH01112

- Lightweight and comfortable
- 2m web shock absorbing lanyard permanently attached to the rear D ring
- Complies to AS/NZS 1891.1



**\$399.00**  
SPECIAL PRICE

**B-SAFE TRAUMA STRAP**

Code: BA00024

- Prevention of suspension trauma after a fall
- Universal attachment to all harnesses
- Two zip up pouches, one for each side of the harness
- Suspension Trauma Straps are only to be used in conjunction with a full body harness.



**\$29.95**  
SPECIAL PRICE

**B-SAFE ARRESTO MINI SELF RETRACTING LANYARD**

Code: BMIC02-130AT

- Extremely light weight (less than 600gm)
- Inbuilt textile energy absorber
- 140kg capacity with 2m length
- Aluminium triple action karabiner with fall indicator
- Edge tested (to 100kg) and approved where falls over an edge are possible



**\$279.00**  
SPECIAL PRICE

**2.5M RETRACTABLE LANYARD**

Code: BL05332.5

- Personal fall arrest device
- Use in conjunction with an approved Full Body Harness
- 100kg capacity



**\$164.00**  
SPECIAL PRICE

MATERIALS HANDLING



**BEAVER 3S LEVER BLOCK**

- High quality Grade 80 chain, with guides to stop load jumping
- Gears fitted with industrial roller bearings



**CHAIN BLOCK**

- Heavy duty steel casing
- High quality Grade 80 chain & superior braking system
- Gears fitted with industrial roller bearings



CODE	SIZES	PRICE
505025	250kg x 1.5m Grey	\$219
503103	1t x 3m Violet	\$179
503203	2t x 3m Green	\$249

**BEAVER PROOF COIL CHAIN REGULAR LINK (25KG PAIL)**

- Ideal for general purpose use
- Available in sizes from 4mm to 8mm
- Galvanised



CODE	SIZES	LENGTH	PRICE
100304P	4mm	80m	\$339
100305P	5mm	57m	\$269
100306P	6mm	33m	\$299
100308P	8mm	21m	\$269

MATERIALS HANDLING



**BEAVER GRADE S BOW SHACKLES**

- Made to AS 2741.
- For heavy duty lifting and towing



CODE	SIZES	PRICE
242306	0.50t	\$2.00
242308	0.75t	\$2.00
242310	1.0t	\$3.95
242311	1.5t	\$3.95
242313	2.0t	\$4.20
242316	3.2t	\$8.00
242319	4.7t	\$12.95

**BEAVER GRADE S DEE SHACKLES**

- Made to AS 2741.
- For heavy duty lifting and towing



CODE	SIZES	PRICE
241306	0.50t	\$1.90
241308	0.75t	\$1.85
241310	1.0t	\$2.80
241311	1.5t	\$4.45
241313	2.0t	\$5.95
241316	3.2t	\$11.00
241319	4.7t	\$18.95

**BEAVER COMMERCIAL DEE SHACKLES HOT DIPPED GALVANISED**

- For general anchoring or connecting objects



CODE	SIZES	PRICE
200305P	5mm	\$2.00
200306P	6mm	\$2.00
200308P	8mm	\$2.00
200310P	10mm	\$2.00
200313P	13mm	\$3.00
200316P	16mm	\$6.95
200320P	20mm	\$10.45

**2500KG YELLOW POWDER COATED PALLET JACK**

PJR001Y

- 2,500kg safe working load (SWL)
- 1 year warranty
- 685mm overall fork width
- Designed for standard Australian pallets

**\$479.00**  
INC. GST



**NARROW 2500KG POWDER COATED PALLET JACK**

PJR002Y

- 2,500kg safe working load (SWL)
- 1 year warranty
- Narrow 540mm overall fork width
- Designed for standard Australian pallets

**\$479.00**  
INC. GST



**SPRING LOADED PALLET LEVELLER**

PLR004

- 2,000kg safe working load
- 1100mm platform diameter
- Platform lowers as weight is added to keep loads at an optimal height when loading/unloading
- 240 - 705mm height

**\$2250.00**  
INC. GST



# HOT DEALS STOREWIDE!

**SAFETY**

**PRO**  
PRO CHOICE SAFETY GEAR

**G-Tek**



**\$29<sup>95</sup>**  
INCL GST

**BCAB**

**AIRBUMP LITE BUMP CAP WITH AIRBUMP FLEX LINER**

- Ultimate bump protection with high ventilation and airflow
- Super light giving ultimate all day comfort
- Standard one size - adjustable: 53 - 64cm



**\$9<sup>95</sup>**  
INCL GST

**BORR | BNRR**

**BEANIE WITH RETRO-REFLECTIVE STRIPES**

- 100% acrylic winter beanies
- Retro-reflective stripes for ease of identification
- Comfortable one piece construction
- Suitable to be worn under a hard hat



**\$65<sup>00</sup>**  
INCL GST

**HMP2-HP**

**HALF MASK RESPIRATOR P2 PARTICULATE HANDY PACK**

- Kit includes: 1 x Mask, 2 x P2 Filters, 5 x pairs of P2 Pre Filters, 1 x Resealable Plastic Box, 1 x Reusable Plastic Bag
- Protects against mechanical and thermally generated particles



**\$10<sup>50</sup>**  
INCL GST

**NPFF(SIZE)**

**PROSENSE STINGA FROST INSULATED GLOVES**

- Seamless 15 gauge nylon liner with acrylic fleece liner
- PVC foam coating provides water/oil repellence, keeping hands dry and warm
- Sizes: 7 - 11



**\$14<sup>95</sup>**  
INCL GST

**41-1415AU(SIZE)**

**G-TEK CUT RESISTANT WINTER GLOVES**

- Nitrile foam coating provides superior grip in dry, wet and oily applications
- Short term Contact Heat protection
- Light medium cut resistant liner
- Sizes: 7 - 11

**maxisafe**  
there's safe and there's Maxisafe.

**3-Panel Flat Fold Respirator with Valve Box of 20 RES510**

- Tested and certified to Australian Standards AS/NZS 1716:2012
- Sculptured nose panel provides excellent field of vision and improves compatibility with eyewear
- Breathable nose cushion reduces sweat levels when worn over a long period of time



**\$59.95**  
inc.GST  
**GREAT DEAL**

**MaxiPRO Safety Goggle & Visor Combo EUV350-C**

- Certified to Medium Impact Resistance AS/NZS 13371:2010
- 'C' approved for splash resistance compliant to AS/NZS 13371:2010



**\$34.95**  
inc.GST  
**GREAT DEAL**

**Black Knight Gripmaster Sub Zero Thermal Glove GNL224**

- Multi-layered Gripmaster technology prevents oil penetration while repelling water ensuring excellent grip
- Thin coating ensures superior flexibility, dexterity and feel



**\$7.95**  
inc.GST  
**GREAT DEAL**

Available in M- 2XL  
GNL224-08 (M)  
GNL224-09 (L)  
GNL224-10 (XL)  
GNL224-11 (2XL)

[maxisafe.com.au](http://maxisafe.com.au)

**SAFETY**

**NINJA**

**FRONTIER SAFETY**

**MACK**

**NINJA MAXIM COOL GLOVE**

Code: NIMXCLNFTGY

- Soft, textured NFT™ coating
- Lightweight design, excellent liquid resistance, exceptional oil grip, durable, long lasting
- Colour: Grey



**\$5.45**  
GREAT VALUE

**SIZES S-2XL**

**NINJA MAXIM C5 GLOVES**

Code: NIMAXMC5BL

- Re-enforcement between thumb and fore finger for durability
- Lightweight liner and coating for maximum comfort and cut resistance



**\$13.95**  
GREAT VALUE

**SIZES S-2XL**

**FRONTIER VISION X SAFETY GLASSES**

**ANTI-FOG LENS**

- Clear: FRVIXSPCCR0000
- Smoke: FRVIXSPSCM0000
- Amber: FRVIXSPCA20000

- Tough polycarbonate frame with anti-scratch lenses for 99.9% UV protection
- Moulded nose bridge
- Ultra lightweight for increased comfort



**\$2.95**  
HOT BUY

ALSO AVAILABLE CLEAR & AMBER LENS

**MACK FORCE ZIP SAFETY BOOT**

BLACK CODE: MKOFORCEZBFF

HONEY CODE: MKOFORCEZHFF

- Steel toe cap
- Anti-static & heat resistant

**SIZES 4-13**  
**1/2 SIZES 6.5-10.5**



**\$179.00**  
GREAT BUY

**WORKARMA**

Focused on Safety



Powered by **BREMICK**

[bremick.com.au](http://bremick.com.au) • [workarma.com.au](http://workarma.com.au)

# FOLLOW US ON FACEBOOK

## DRILLING

**sutton**

Superior Since 1917



### Heavy Duty Bi-Metal Cobalt Holesaw Sets

Industrial quality holesaw designed for machine or hand drilling in steel, stainless steel, cast iron, non-ferrous metals, plastic and wood.  
 • 32mm Cutting Depth

Size	Item #	Price Inc. GST
<b>11pc Maintenance Set</b> Holesaws: 19, 22, 25, 32, 35, 38, 44, 51, 54, 63 & 76mm	H125 BM3	<b>\$185.00</b>
<b>10pc General Purpose Set</b> Holesaws: 16, 19, 22, 25, 29, 32, 35, 38, 44 & 51mm	H125 BM5	<b>\$159.00</b>
<b>7pc Electrician Set</b> Holesaws: 16, 20, 22, 25, 32, 40 & 51mm	H125 BM9	<b>\$99.00</b>



**11 Piece Tradesman's Cobalt Bi-Metal Hole Saw Kit**  
 HSS-Co Cobalt cutting edge.  
 4/6 variable tooth configuration.  
 48mm (1-7/8") depth of cut.  
 5mm (3/16") thick heavy-duty backing plate eliminates need for a drive plate.  
 Contains 16, 20, 22, 25, 32, 40, 51, 54 & 60mm hole saws, quick change adaptor and spare HSS pilot drill.

**\$215.00**  
7030-S1



**Spiral Flute Tin Coated 3 Piece step drill set**  
 4-12, 4-20, 4-32mm  
 Designed for drilling repetitive holes in steel, stainless steel, copper, brass, aluminium, plastic, plexiglass, laminates and many other thin materials.  
 Premium quality HSS with double fluted ground cutting edges for long life.

**\$69.95**  
8035-S1

**HSS-Co5 (Cobalt) 135° Split Point Drill Set**  
 Superior performance and increased tool life especially in stainless and high tensile steels.  
 25 Piece Metric 1.0-13.0 x 0.5mm rises.



**\$185.00**  
8012-M3

**sutton**

Superior Since 1917

**VENOM**

### Cutting Lubricants

- Reduces torque and friction for up to 2X tool life
- Produces extremely high quality surface finish
- Suitable for drills, taps, endmills, holesaws and more

Size	Item #	Price Inc. GST
Paste 400g	M800 0400	<b>\$44.95</b>
Spray 300g	M800 0300	<b>\$22.80</b>
Fluid 250ml	M800 0250	<b>\$14.95</b>
Fluid 4L	M800 4000	<b>\$187.00</b>



**Alpha TUFFBOX PRO**

**TUFF NEW CASE**  
NEW AND IMPROVED!

**Alpha**

**28 Piece TUFFBOX PRO Drill & Tap Set METRIC & UNC**  
 Ideal For Steel, aluminium, copper & brass  
**\$285.00** INC GST  
 SMUHT28TP-B  
 BONUS 120ml Carbon XTRA

**26 Piece Metric TUFFBOX PRO Gold Series Drill Set**  
 Ideal For Steel, wood, plastic & stainless steel  
**\$219.00** INC GST  
 SM26TP  
 Contains: 2.0-13.0mm

**25 Piece Metric TUFFBOX PRO Cobalt Series Drill Set**  
 Ideal For Stainless steel, high tensile steel & cast iron  
**\$389.00** INC GST  
 SM25C0TP  
 Contains: 1.0-13.0mm

**8 Piece REO Head TUFFBOX PRO SDS Plus Drill Set 5-14mm x 165mm**  
 Ideal For REO concrete, masonry & concrete  
**\$185.00** INC GST  
 SM8SP2TP  
 Contains: 5.0 - 14.0 x 165mm

**sutton**

Superior Since 1917



**Die Grinder Kit**

- Pneumatic Die Grinder
- Die Grinder Collets: 1/8", 1/4", 3 & 6mm
- 2 x Wrenches

**\$120<sup>00</sup>**  
INC GST  
P/N: B902 0002



**5pc Carbide Burr Set**

- Double Cut
- 1/4" Cylindrical (Square), Cylindrical (Radius), Ball, Tree (Radius), Cylindrical (Radius Al-Cut)
- 1/4" Shank

**\$199<sup>00</sup>**  
INC GST  
P/N: B900 SCB100



**5pc Carbide Burr Set**

- Double Cut
- 3/8" Cylindrical (Square)
- 3/8" & 1/2" Cylindrical (Radius) & Tree (Radius)
- 1/4" Shank

**\$319<sup>00</sup>**  
INC GST  
P/N: B900 SCB5

**sutton**

Superior Since 1917



**BLUE BULLET**

**\$199<sup>00</sup>**  
INC GST  
P/N: D102 SM3

**25pc Blue Bullet Drill Set**

- 1.0 - 13.0 x 0.5mm
- Blue surface finish for ferrous applications
- Made from M2 HSS



**BLUE BULLET**

**\$219<sup>00</sup>**  
INC GST  
P/N: D102 S3

**29pc Blue Bullet Drill Set**

- 1/16 - 1/2 x 1/64 rises
- Blue surface finish for ferrous applications
- Made from M2 HSS



**COBALT**

**\$459<sup>00</sup>**  
INC GST  
P/N: D109 SM3

**25pc Cobalt Drill Set**

- 1.0 - 13.0 x 0.5mm
- 135° Split point
- Ideal for cast iron, bronze, hard steel & stainless steel
- Made from HSS Co.

**sutton**

Superior Since 1917



**FN**

**3pc HSS Countersink Set**

- 90° three flute
- Made to DIN335 specifications

**\$63<sup>00</sup>**  
INC GST  
P/N: 107CS0003



**\$159<sup>00</sup>**  
INC GST  
P/N: 165399200

**200pc HSS Bright Drill Set**

- Metric Sizes: 1.0 - 6.0mm x 0.5mm rises + 3.2, 4.2, 8.0, 10.0 & 12.0mm
- Imperial Sizes: 5/64 - 7/32 x 1/64 rises + 1/4, 5/16, 3/8 & 1/2



**\$119<sup>00</sup>**  
INC GST  
P/N: 149060006

**25pc HSS-Cobalt Drill Set + BONUS Countersink**

- Metric sizes: 2.0 - 13.0mm
- Bonus 16.5mm Countersink

**sutton**

Superior Since 1917



**VIPER PLUS+**

**\$255<sup>00</sup>**  
INC GST  
P/N: D179 SM3

**25pc Viper Plus Drill Set**

- 1.0 - 13.0mm x 0.5mm rises
- TiAIN Futura Nano Coated Tip
- Made from M2 HSS



**3pc HSS Step Drill Set**

- For use in sheet metal, aluminium, plastic and fibreglass.
- Range 4-12, 9 steps
- Range 4-20, 9 steps
- Range 4-30, 14 steps

**\$239<sup>00</sup>**  
INC GST  
P/N: D504 SET3



**10pc Screw Extractor Set**

- Screw Extractors: #1-#5
- Left Hand Cobalt Drills: 2.0, 3.0, 4.0, 5.5, 7.5mm

**\$85<sup>00</sup>**  
INC GST  
P/N: M603 S20L



# SHOP SMART - BUY SMART

## ABRASIVES & CUTTING



### FLEXOVIT Mega-Line Inox Cutting Off Wheel

**LONG LIFE**

**BONUS FLEXOVIT MEGALINE 25 PACK**

**\$215<sup>00</sup> EACH**

**BEST SELLER!**

66253371090

66253371411 125 x 1.0 x 22.2mm

- Coarse aluminium oxide grain provides fast material removal rate
- Hard wheel grade for long product life

### FLEXOVIT Diamond Triple Pack

**FAST CUT**

**\$69<sup>00</sup> EACH**

**HOT DEAL!**

70184601733 125 x 2 x 10 x 22mm

- Suitable for many different specialty masonry cutting machines and angle grinders

### FLEXOVIT Flap Disc

**HIGH REMOVAL**

**\$6<sup>40</sup> EACH**

**GREAT BUY!**

78072761220 125x22mm

- For carbon steel, stainless steel, cast iron, plastics bronze and brass
- Excellent grinding and finishing
- Available in Z40, Z60, Z80 and Z120 grits

### FLEXOVIT Multi-Purpose Cut Off Disc

**ALL IN ONE**

**\$3<sup>30</sup> EACH**

**GREAT BUY!**

66253370636 125 x 1.0 x 22.23mm

- Ideal for cutting multiple materials like masonry, aluminium, brass, PVC, glass and ceramic

**100 discs**

**BONUS!**

Bonus ST358A ribbed backing pad & disc dispenser RRP \$55

**FS964 Ceramic fibre disc**

Premium product with excellent performance for working on steel. High aggressiveness thanks to self-sharpening, aggressive ceramic grains throughout the service life. Outstanding grit adhesion. Advanced coating technology (ACT) for extraordinary grain adhesion and extended service life. (125mm x 36#).

**\$329<sup>00</sup>**

P/N: 357208

**\$16<sup>95</sup>**

P/N: 358004

125mm

**NCD200HD Ceramic stripping disc**

Hard, aggressive non-woven version for higher loads. Open structure. No clogging. Cool grinding. Fast work progress and long service life.

**\$14<sup>95</sup>**

**CERAMIC**

125mm

369301 - 40#  
369303 - 60#  
369304 - 80#

**SMT975 Ceramic trimmable flap disc**

Easy mounting due to integrated M14 thread. Very long tool life due to trimmable backing plate. High and fast stock removal



### NORTON Double Row Cup Grinder

**CONFORMABLE**

**\$109<sup>00</sup> EACH**

**HOT DEAL!**

70184601164 125 x 5 x 8 x 22.2mm

- For the fast rectification of surface defects in masonry construction products
- Double row diamond segments

### NORTON BDX Cut Off 10 Pack Tin

**FAST CUT**

**\$17<sup>90</sup> TIN**

**GREAT DEAL!**

66252845962 125 x 2 x 10 x 22mm

- High performance, great value
- Developed for industrial and trade applications
- Handy 10 pack tin

### BEAR Gaffer Grizzly Tape

**x2 STRONGER**

**\$19<sup>95</sup> EACH**

**GREAT VALUE!**

63642548203 50mm x 18M Black  
63642548237 50mm x 18M Silver

- Ultra tough Gaffer tape
- 2 times stronger than standard Bear Gaffer tape

### BEAR PVC Duct Tape

**STRONG ADHESIVE**

**\$4<sup>95</sup> EACH**

**GREAT BUY!**

63642583589 48mm x 30M Black  
63642548313 48mm x 30M Grey

- Made from PVC to provide excellent stretch, conformability & durability

**KLINGSPOR**

**A60TZ Thins in tins 125mm x 1mm**

Free of iron, sulphur and chlorine. Fast cutting. Minimal burr formation. Low thermal load. 10 pieces in a tin with viewing window for easy removal.

**\$26<sup>95</sup>**

P/N: 310504

**DT600U SUPRA Segmented blade**

Suitable for a various range of applications. First-rate cutting performance. Exceptional service life. Clean cutting edges.

**\$39<sup>95</sup>**

**PRICED FROM...**

125mm - 322631 - \$39.95  
230mm - 322634 - \$79.00

**\$39<sup>95</sup>**

**PRICED FROM...**

150mm Steel - 363997 \$39.95 - Inox - 364000 \$62.00  
200mm Steel - 363999 \$62.00 - Inox - 364002 \$93.00

**BR600W Crimped wire wheel**

Suitable for low to medium duty brushing and deburring of cut edges, tubes or small parts. High fill density for a long service life.

# WHEN HEAVY DUTY MATTERS

ABRASIVES

## CC-GRIND-ROBUST

- Significantly reduced noise, vibrations and dust
- Fast stock removal without applying pressure
- More work with less effort
- No need for flange set

**\$10<sup>95</sup>**  
A/N.: 64195126



## MX-NCC Burr Sets

General Purpose Tungsten Carbide - 1/4" Shank

- Value for money
- Very good stock removal
- Set of popular shapes

**4pc Burr Set**  
1 x Cylindrical  
1 x Cylindrical Radius  
1 x Pointed Tree  
1 x Tree Radius

**\$119<sup>00</sup>**  
A/N.: 75609063



**8pc Burr Set**  
1 x Cylindrical  
3 x Cylindrical Radius  
1 x Tree Radius  
1 x Cone Radius  
1 x Pointed Cone  
1 x Ball

**\$199<sup>00</sup>**  
A/N.: 75609064



## POLICLEAN Pro

(5") 125 mm x13 mm

- For coarse cleaning work such as removing paint, scale, heat discoloration, rust and adhesive residues
- Suits face-down grinding
- High flexibility and no clogging
- Can be used on most materials

**\$18<sup>95</sup>**  
A/N.: 47803249



## Economy Rolls

Grit	25mmx50m	50mmx50m
	A/N.	A/N.
60	47300038	47300050
80	47300039	47300051
100	47300031	47300052
120	47300032	47300053
180	47300034	47300055
Each Incl. GST	\$32.95	\$48.95

- Highly flexible material with excellent grit adhesion
- Easily adapted to all workpieces
- Consistent finish & long life

\* Other grits & sizes also available



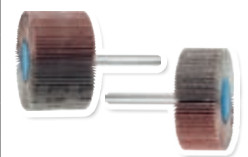
## Fan Grinders

6mm Shank/Aluminium Oxide

- Heavy duty cloth backed flaps
- Good flexibility
- Adapts well to various work pieces

Size mm	Grit	A/N.	Pack	Each Pack Incl. GST
30x15	60	47800131	4	\$34.95
	80	47800132		
40x20	60	47800133	3	\$34.95
	80	47800134		

Size mm	Grit	A/N.	Pack	Each Pack Incl. GST
50x30	60	47800135	2	\$29.95
	80	47800136		
60x30	60	47800137	2	\$32.95
	80	47800138		



FREIGHT CHARGES MAY APPLY



POWER TOOLS



**XGT** **40V Max** POWER WITHOUT LIMITS™

**\$989**

GREAT VALUE!



**DK0176G206**  
40V Max Brushless 2 Piece Combo Kit  
• Kit includes: HP001GZ, TD003GZ,  
2x BL4025, DC40RC & tote bag (832319-7)

**\$1,649**

GREAT VALUE!



**LM001GT203**  
40V Max Brushless Self-Propelled  
480mm Lawn Mower Kit  
• Includes 2 x 5.0Ah batteries and  
single port rapid charger  
• No Load Speed of up to 3,200rpm

**\$619**

GREAT VALUE!



**CF003GZ**  
40V Max / 18V 450mm (17-3/4")  
Jobsite Fan  
• Automatic oscillating fan increases  
airflow dispersion  
• Powered by a single 40V Max XGT  
or 18V LXT battery or AC power

TOOL ONLY

**\$1,029**

GREAT VALUE!



**MW001GZ-B**  
40V Max Microwave  
• **BONUS:** Microwave Toastie Maker  
• Dual stage maximum power output  
for heating and defrosting food  
• Powered by a single 40V Max  
XGT battery there are dual battery  
terminals for extended runtime

TOOL ONLY

**\$1,129**

GREAT VALUE!



**DLX3150TX1**  
18V Brushless 3 Piece Combo Kit  
• Kit includes: DHP486Z, DTW300Z, DGA508Z,  
2x BL1850B, DC18RC & carry bag (199936-9)

**\$899**

GREAT VALUE!



**DLX3188CM**  
18V 3 Piece Combo Kit  
• Kit includes: DLM330Z, DUR192LZ, DUB186Z,  
2x BL1840B & DC18SH

**\$1,839**

GREAT VALUE!



**DLX6125TX1**  
18V Brushless 6 Piece Combo Kit  
• Kit includes: DHP486Z, DTD154Z, DGA504Z, DHS660Z,  
DHR182Z, DJR189Z, 2x BL1850B, DC18RC & carry bag  
(199936-9)

**\$549**

GREAT VALUE!



**DJS132Z**  
18V Brushless 1.3mm Offset Metal Shear  
• Designed for corrugated roofing in steel  
up to 1.3mm (18Ga)  
• Cutting head is 360° rotatable with 12 stops  
for comfortable use

TOOL ONLY

**\$519**

GREAT VALUE!



**DFR453Z**  
18V Brushless Collated Screwdriver  
• Push Drive Technology – motor starts only when the  
fastener engages  
• Brushless Motor delivers 0-4,500rpm

TOOL ONLY

**\$909**

GREAT VALUE!



**1913Y7-1**  
40V Max Battery & Charger Combo  
• Includes: Dual Port Rapid Charger (DC40RB) &  
2x 5.0Ah (BL4050F)

ACCESSORIES



# HOT DEALS STOREWIDE!

POWER TOOLS

**metabo**  
100 YEARS

Redemption offers for cordless purchases \$699 and over.

For details, terms, conditions or to redeem, scan the QR code or visit [metabo.com/redemptions](http://metabo.com/redemptions).



## THE MOST POWERFUL 125mm GRINDERS IN THE WORLD!

### Brand New! 2000W BRUSHLESS Angle Grinders 125mm

**600643190**  
WEPBA 20-125 QUICK DS BL



Detachable dust filter

**BRUSHLESS**  
Paddle Switch  
Safety Clutch  
Fast Brake  
M-Quick Nut  
Restart Protection  
Soft Start  
Constant Torque  
Overload Protection

Drop Secure ring for affixing a safety lanyard

**\$569<sup>00</sup>**  
GREAT VALUE!

**600641000**  
WEVBA 20-125 QUICK BL



Detachable dust filter

**BRUSHLESS**  
Safety Clutch  
Fast Brake  
M-Quick Nut  
Restart Protection  
Soft Start  
Constant Torque  
Overload Protection  
Variable Speed 2800-11000 rpm

**\$549<sup>00</sup>**  
GREAT VALUE!

**600642190**  
WEBA 20-125 QUICK BL



Detachable dust filter

**BRUSHLESS**  
Safety clutch  
Fast Brake  
M-Quick Nut  
Restart Protection  
Soft Start  
Constant Torque  
Overload Protection  
Auto Balancer

**\$549<sup>00</sup>**  
GREAT VALUE!

### LTX 18V BRUSHLESS Angle Grinders. Equivalent to 1500W Corded Angle Grinders!

**601730850**  
WB 18 LTX BL 15-125 QUICK



Detachable dust filter

**BRUSHLESS**  
Ø 125 mm  
10000 rpm  
Fast Brake  
M-Quick Nut  
Electronic & Mechanical Safety Clutches  
Soft Start  
Overload Protection  
Restart Protection  
Tool-free adjustable guard  
SKIN ONLY

**\$419<sup>00</sup>**  
GREAT VALUE!

**601731850**  
WVB 18 LTX BL 15-125 QUICK



Detachable dust filter

**BRUSHLESS**  
Ø 125 mm  
Variable Speed (2500 - 10000 rpm)  
Fast Brake  
Electronic & Mechanical Safety Clutches  
Soft Start, Overload & Restart Protection  
M-Quick Nut  
Tool-free adjustable guard  
SKIN ONLY

**\$459<sup>00</sup>**  
GREAT VALUE!

**601734840**  
WPBA 18 LTX BL 15-125 QUICK DS



Detachable dust filter

**BRUSHLESS**  
10000 rpm  
Paddle Switch  
Fast Brake  
Autobalancer  
Safety Bracket  
Tool-free adjustable guard  
Electronic & Mechanical Safety Clutches  
M-Quick Nut  
Soft Start, Overload & Restart Protection  
Battery pack lockable in 4 different positions  
SKIN ONLY

**\$479<sup>00</sup>**  
GREAT VALUE!

### BRUSHLESS 18V Slim Body Die Grinders. Feel the power!

**18V Brushless Die Grinder**

**600826850**  
GVB 18 LTX BL 11-28



Detachable dust filter

**BRUSHLESS**  
6 mm & 1/4" Collets  
Variable speed (8000 - 28000 rpm)  
Long spindle design with spindle lock  
Electronic Safety Clutch  
Battery pack lockable in 4 different positions  
1 second Fast Brake  
Electronic soft start, overload & restart protection  
1100 W electric die grinder performance  
Slim body

**\$349<sup>00</sup>**  
GREAT VALUE!

**18V Brushless Die Grinder**

**600827850**  
GVPB 18 LTX BL 11-28



Detachable dust filter

**BRUSHLESS**  
6 mm & 1/4" Collets  
Variable speed (8000 - 28000 rpm)  
Long spindle design with spindle lock  
Electronic Safety Clutch  
Battery pack lockable in 4 different positions  
Deadman/Paddle Switch  
1 second Fast Brake  
Electronic soft start, overload & restart protection  
1100 W electric die grinder performance  
Slim body

**\$359<sup>00</sup>**  
GREAT VALUE!

**18V Brushless High Torque Die Grinder**

**600829850**  
GVB 18 LTX BL 11-7 HT



Detachable dust filter

**BRUSHLESS**  
6 mm & 1/4" Collets  
Variable speed (1500 - 7000 rpm)  
High torque/low speed - ideal for flap wheels  
Long spindle design with spindle lock  
Electronic Safety Clutch  
Battery pack lockable in 4 different positions  
1 second Fast Brake  
Electronic soft start, overload & restart protection  
1100 W electric die grinder performance  
Slim body

**\$369<sup>00</sup>**  
GREAT VALUE!

**18V Brushless Compact Die Grinder**

**600828850**  
GVB 18 LTX BL 11-28 COMPACT



Detachable dust filter

**BRUSHLESS**  
6 mm & 1/4" Collets  
Variable speed (8000 - 28000 rpm)  
Compact spindle design  
Electronic Safety Clutch  
Battery pack lockable in 4 different positions  
1 second Fast Brake  
Electronic soft start, overload & restart protection  
1100 W electric die grinder performance  
Slim body

**\$279<sup>00</sup>**  
GREAT VALUE!

FREIGHT CHARGES MAY APPLY



# HOT DEALS STOREWIDE!

## POWER TOOLS



Nothing but **HEAVY DUTY.**™



**AUTHORISED  
RETAIL PARTNER**

PN: M18FPP2FN-502B

### M18 FUEL™ FRAMING/ FINISH NAILER KIT

BONUS VIA REDEMPTION  
M18B5

**\$1649.00**  
REDEMPTION OFFER!



PN: M18FPP4A3503B

### M18 FUEL™ 4 PIECE POWER PACK 4A3

BONUS VIA REDEMPTION  
M18B5

**\$1590.00**  
REDEMPTION OFFER!



REDEMPTION  
M18™  
REDLITHIUM™  
5.0AH  
BATTERY

REDEEM

M18 FUEL  
DRIVEN TO OUTPERFORM.

REDEMPTION  
M18™  
REDLITHIUM™  
5.0AH  
BATTERY

REDEEM

M18 FUEL  
DRIVEN TO OUTPERFORM.

PN: M18FPP3B3502B

### M18 FUEL™ 3 PIECE POWER PACK 3B3

WITH BONUS M18BBL-0

**\$1199.00**  
GREAT DEAL!



BONUS  
M18™  
COMPACT  
BLOWER  
(TOOL ONLY)

M18 FUEL  
DRIVEN TO OUTPERFORM.

PN: M180NEFHWF34-502C

### M18 FUEL™ ONE-KEY™ 3/4" HIGH TORQUE IMPACT WRENCH WITH FRICTION RING KIT

WITH BONUS 49667017

M18 FUEL  
DRIVEN TO OUTPERFORM.

BONUS  
SHOCKWAVE™  
3/4" DRIVE 8PC  
SAE STANDARD  
6 POINT IMPACT  
SOCKET SET

REDEEM



**\$1088.00**  
GREAT DEAL!

PN: M18RL1220-301C

### M18™ DUAL GRADE ROTARY LASER 1220M (4000') KIT

NEW

**\$3598.00**  
NEW PRODUCT!

M18

PN: M18JSRDAB20

### M18™ BLUETOOTH JOBSITE RADIO DAB+ (TOOL ONLY)



**\$389.00**

NEW PRODUCT!

NEW

M18

PN: M18FOPHPP3A802

### M18 FUEL™ OUTDOOR POWER HEAD 3 PIECE POWER PACK 3A

BONUS VIA REDEMPTION M18FOPH-LTA

**\$1298.00**  
GREAT BUY!



REDEMPTION  
M18 FUEL™  
LINE TRIMMER  
ATTACHMENT

REDEEM M18 FUEL  
DRIVEN TO OUTPERFORM.

PN: M18FTCHS12802

### M18 FUEL™ 12" (305 MM) TOP HANDLE CHAINSAW KIT

BONUS VIA REDEMPTION M18JSRDAB20

M18 FUEL  
DRIVEN TO OUTPERFORM.

REDEMPTION  
M18™  
BLUETOOTH®  
JOBSITE RADIO  
DAB+ (TOOL  
ONLY)

REDEEM



**\$1028.00**  
GREAT DEAL!

PN: M18FBLG30

### M18 FUEL™ BLOWER (TOOL ONLY)



NEW

**\$418.00**

GREAT BUY!

M18 FUEL  
DRIVEN TO OUTPERFORM.

PN: M18F2BPBLO

### M18 FUEL™ DUAL BATTERY BACKPACK BLOWER (TOOL ONLY)



NEW

M18 FUEL  
DRIVEN TO OUTPERFORM.

**\$898.00**

GREAT BUY!

PN: M12BPRT-401B

### M12™ RIVET TOOL KIT (1X 4.0AH)

WITH BONUS 48228435

**\$620.00**  
GREAT DEAL!



BONUS  
PACKOUT™  
COMPACT  
ORGANISER

M12

# WHEN HEAVY DUTY MATTERS!

POWER TOOLS



Nothing but **HEAVY DUTY™**



**AUTHORISED  
RETAIL PARTNER**

PN: 48228426

## PACKOUT™ ROLLING TOOLBOX

BONUS VIA REDEMPTION 48228424



**REDEMPTION  
PACKOUT™  
TOOL BOX**



**\$399.00**

**REDEMPTION OFFER!**

**REDEEM PACKOUT™**

PN: 48228430

## PACKOUT™ ORGANISER



**\$113.00**

**GREAT BUY!**

**PACKOUT™**

PN: 48228443

## PACKOUT™ 3-DRAWER TOOL BOX



**\$327.00**

**GREAT BUY!**

**PACKOUT™**

PN: 48228432

## PACKOUT™ DEEP ORGANISER



**\$138.00**

**GREAT BUY!**

**PACKOUT™**

PN: 48225112

## DIGITAL MEASURING WHEEL 305MM (12")

WITH BONUS 48220505



**BONUS  
COMPACT  
MAGNETIC TAPE  
MEASURE 5M**

**\$166.00**

**GREAT DEAL!**

PN: 49224185

## HOLE DOZER™ HOLE SAW 28-PIECE KIT FOR GENERAL PURPOSE

BONUS VIA REDEMPTION M18FHZ-0



**REDEMPTION  
M18 FUEL™  
HACKZALL™  
RECIPROCATING  
SAW (TOOL ONLY)**

**REDEEM**

**\$332.00**

**REDEMPTION OFFER!**

PN: 49224035

## HOLE DOZER™ HOLE SAW 19-PIECE KIT FOR GENERAL PURPOSE

WITH BONUS 48324081



**BONUS  
SHOCKWAVE™  
29PC IMPACT  
DRIVER BIT SET**



**\$247.00**

**GREAT DEAL!**

PN: 49221132

## SAWZALL™ BLADES 32-PIECE SET

WITH BONUS 48221500



**BONUS  
FASTBACK™  
COMPACT  
FOLDING UTILITY  
KNIFE**

**\$107.00**

**GREAT DEAL!**

PN: 48899398

## COBALT ALCRN STEP DRILL BIT SET (1) 4-20MM, (1) 6-35MM

**NEW**



**\$193.00**

**GREAT BUY!**

PN: L4FL2000301

## REDLITHIUM™ USB RECHARGEABLE SLIDE FOCUS FLASHLIGHT KIT

**REDLITHIUM-ION**

**\$148.00**

**GREAT BUY!**



PN: L4HL2301

## REDLITHIUM™ USB RECHARGEABLE HARD HAT HEADLAMP 600 LUMEN 3.0 AH KIT

**REDLITHIUM-ION**

**\$169.00**

**GREAT BUY!**



PN: L4RLEPB301

## REDLITHIUM™ USB BLUETOOTH HEADPHONES 3.0 AH KIT

**REDLITHIUM-ION**

**\$197.00**

**GREAT BUY!**



NOW AVAILABLE! OFFER VALID FROM 1ST JULY TO THE 30TH SEPTEMBER. REDEMPTIONS Terms and Conditions apply, see website for details. Offers valid during the promotional period 1st July 2024 until 30th September 2024. Online redemption must be claimed by 14th October 2024. Please allow up to 8 weeks for delivery. <https://www.milwaukeetool.com.au/terms-and-conditions-redemption.html>

FREIGHT CHARGES MAY APPLY



## THE BONE™

The uniquely designed, industry proven, stools & creepers



### BONE-STER LOW PROFILE

P/N: BONE4031



**\$479**  
180 KG LOAD!

Size: 1092L x 594W x 114H mm  
Ground Clearance: 38 mm

### THE BONE CREEPER LOW PROFILE

P/N: BONE6031



**\$599**  
180 KG LOAD!

Size: 1194L x 648W x 160H mm  
Ground Clearance: 45 mm

### BONE ROUGH RIDER CREEPER

P/N: BONE7031



**\$649**  
180 KG LOAD!

Size: 1194L x 648W x 191H mm  
Ground Clearance: 73 mm

## KINCROME

**\$975.00**  
GREAT BUY!

### 5 Piece Ratcheting Vehicle Positioning Jack

PN: K12192



- > 684kg Working load capacity (each)
- > 285-660mm Adjustment range
- > 330mm Wheel width capacity
- > Makes manoeuvring cars, boats & trailers a breeze

**\$499.00**  
GREAT BUY!

### Hydraulic Garage Jack

PN: K12167



- > Height raised: 520mm
- > Height lowered: 107mm
- > Working Load Limit: 2,800kg
- > Twin pistons for superior lifting speeds

### Bottle Jack

1850kg Welded

PN: K12150

4000kg Welded

PN: K12151

6000kg Welded

PN: K12152

10000kg Welded

PN: K12153



**\$59.00**

1850KG WELDED

**\$75.00**

4000KG WELDED

**\$85.00**

6000KG WELDED

**\$119.00**

10000KG WELDED

- > Full welded construction ensures leak free operation
- > Welded side handle for easy manoeuvrability
- > Billet steel base for increased strength and stability
- > Twin-sealed pistons

P/N: BMEA-H35

### ONE PERSON EARTH AUGER

- Honda GX35 engine
- Includes 3 drill sizes
- 100mm, 150mm, 200mm and a 450mm extension bar
- Honda GX 3 year warranty
- Bullmax 1 year warranty
- Honda Australia Approved
- Assembled in Australia



**\$1395**  
GREAT VALUE!

Stand not included

P/N: BMPD-H80-2

### HEAVY DUTY POST DRIVER

- Gear box and compressor deliver maximum striking power from the GX35 engine
- Interchangeable sleeves 55 & 75mm & 80mm post guide housing
- Honda GX 3 year warranty
- Bullmax 1 year warranty
- Assembled in Australia



**\$1795**  
GREAT VALUE!

P/N: BMPD-H35-2

### 4 STROKE POST DRIVER

- Honda GX35 engine
- Lightest on the market
- Incl 4 interchangeable sleeve heads - 45, 55, 73 & 80mm
- Comes in a carry case
- Honda GX 3 year warranty
- Bullmax 1 year warranty
- Honda Australia Approved
- Assembled in Australia



**\$1495**  
GREAT VALUE!

P/N: BMLS-H30TL

### 30 TON LOG SPLITTER WITH HYDRAULIC LIFTER

- Honda GX200 engine
- Lifting capacity 60kg
- 12.9 second cycle time
- Extra Large loading table
- Jockey wheel
- Honda GX 3 year warranty
- Bullmax 1 year warranty

- Honda Australia Approved
- Designed in Australia



**\$3895**  
GREAT VALUE!

## BORDO INDUSTRIAL TOOLS

### Engineer's Quick Reference Pocket Book

An essential reference for any workshop.

50 laminated pages of charts, tables and formulae in a handy 90x148mm pocket book.

Contains Equivalence Charts, Reference Tables, Formulae, Feeds & Speeds, Tapping information and more . . .



**\$1995**  
9910-EPBM-V1



**\$105.00**  
3010-S1

**HSS Drill Tap Set - Metric Coarse**  
Drill, Tap and Deburr in one operation. One piece design guarantees correct drill for tap size. Maximum capacity 10 gauge (3.5mm). Contains 3, 4, 5, 6, 8 & 10mm.

### Delta Point High Performance M2-HSS Jobber Drill Set with BONUS HSS Step Drill.

25 Piece Metric 1.0-13.0 x 0.5mm rises.

**\$185.00**  
2015-M3-SDM1



**BONUS**

**TRADESMART MEMBERS:** ACT: • Fishwick NSW: • Albury • Banksmeadow • Bega • Beresfield • Broken Hill • Casino • Coffs Harbour • Coonamble • Cootamundra • Corowa • Cowra • Erina • Forbes • Goulburn • Gunnedah • Hay • Moorebank • Mudgee • Muswellbrook • Narrabri • Penrith • Seven Hills • Silverwater • Tamworth • Tomago • Tumut • West Wyalong • Wetherill Park • Young  
NT: • Alice Springs QLD: • Blackwater • Bowen • Biloela • Bundaberg • Cairns • Caloundra • Charleville • Charters Towers • Chinchilla • Clermont • Coomera • Hughenden • Longreach • Mareeba • Moranbah • Mount Isa • Proserpine • Rockhampton • Richmond • Roma • Springsure • Stanthorpe • Toowoomba • Tully • Yatala SA: • Berri • Edwardstown • Kilburn • Naracoorte • Penola  
TAS: • Derwent Park • Invermay • Ulverstone VIC: • Cobram • Dandenong • Geelong North • Horsham • Laverton Nth • Mildura • Robinvale • Shepparton • Traralgon • Tullamarine WA: • Albany • Bibra Lake • Busseton • Geraldton • Kalgoorlie • Kalgoorlie • Maddington • Moora • Narrogin • Northam • Osborne Park • Port Hedland • Rockingham • Welshpool

ALL PRICES INCLUDE GST: Some products are subject to plus freight costs where applicable. Some advertised products may not be available at all stores & may be subject to availability. Prices are valid while stocks last and we reserve the right to correct any errors or omissions without prior notice. Images shown throughout this catalogue are for illustrative purposes only - some items may vary.

